



# White Rock Wind Farm

Project Update for  
Community Consultative Committee

6<sup>th</sup> August 2015



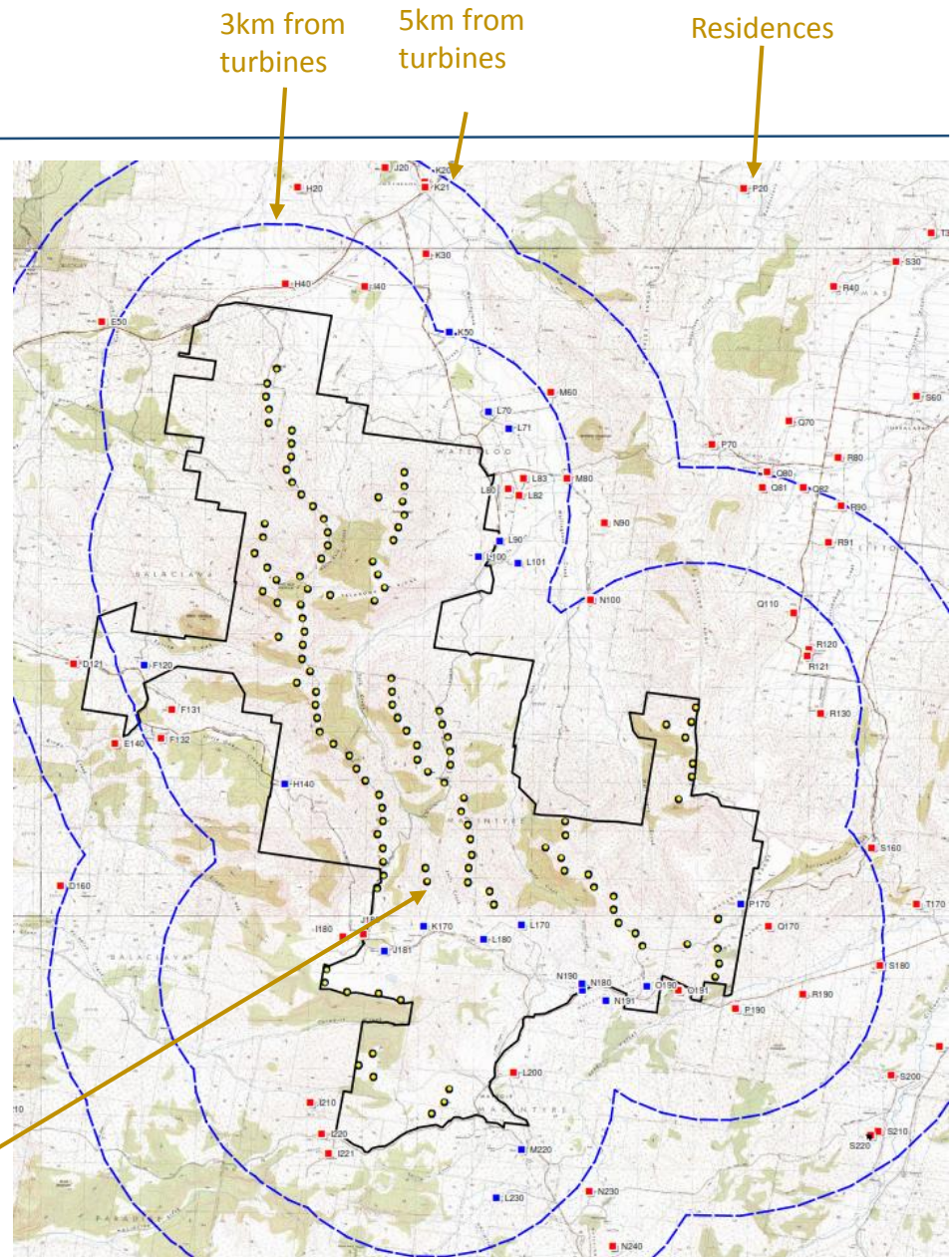
# Content

---

1. Project Recap
2. Who is Goldwind?
3. Stage 1 Description
4. Expected Program
5. Consultation Aims and Objectives
6. Benefits
7. Project Activities
  - a) Modification applications
  - b) Detailed design work – micrositing of layout
  - c) Construction and Environmental Management Plan (CEMP)
  - d) Access and traffic
  - e) Involvement of near neighbours
  - f) Wider community consultation

# Project Recap

- Project approved in July 2012 for 119 turbines.
- Goldwind acquired the project in October 2014.
- Transgrid agreed to connect to electricity network - 132kV line near Gwydir Highway.
- Wind speeds are good and suit Goldwind turbines very well.
- 17 host landowners.
- Site size is 17.5km North-South, 7.5km West-East.



# Who is Goldwind?

---

## **Goldwind Global**

- Goldwind is a global leader in manufacturing of wind turbines working across six continents.
- Strong research and development capabilities.
- Over 16 years of experience in the wind industry.
- Over 19GW of power installed and over 14,000 turbines installed worldwide as of end 2014.
- Leader in permanent magnet drive wind turbines and does not have a gear box. The design increases efficiency, reduces maintenance costs and downtime.

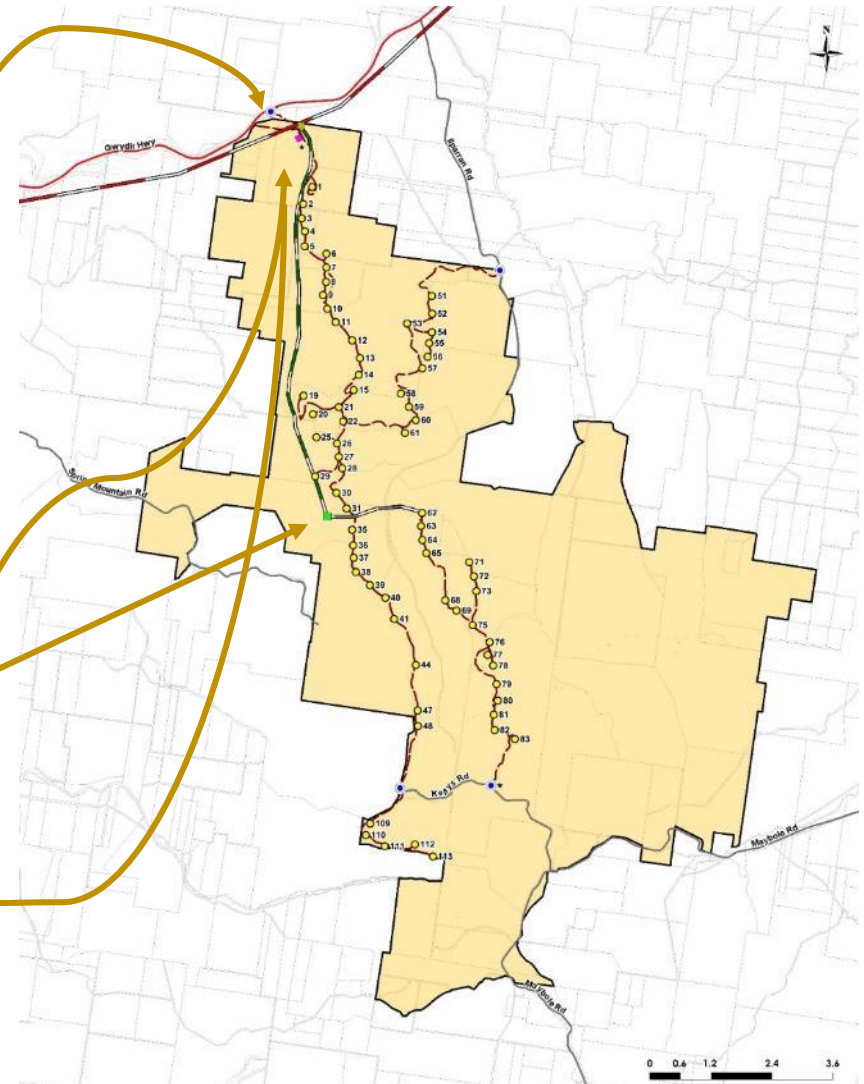
## **Goldwind Australia**

- Goldwind Australia established in 2009.
- Offices in Sydney and Melbourne.
- 40 highly experienced employees.
- Completed two wind farms in Australia (Mortons Lane in VIC and Gullen Range in NSW).



# Stage 1 Description

- 70 x GW 121 2.5MW turbines proposed (175MW).
- Designed layout chosen for constructability, wind resource and environmental reasons.
- Turbine size 90m towers, 150m to tip height.
- Located between Gwydir Highway and Kellys Road.
- 132kV grid Connection near Hwy.
- Substation near middle of project.
- Construction compound at north of site.
- O&M building at north of site.



# Expected Program



# Consultation Aims and Objectives

---

- To enable community integration of the project.
- To be an integrated and valued project in the local community for the lifetime of the project.
- To ensure benefits to the local community.
- To deliver a high quality, community appropriate, responsive and responsible project.
- Open communication and an open door policy – happy to meet neighbours at any time.

# Benefits

---

## Clean Renewable Electricity

- Green and renewable electricity capable of servicing 75,000 homes annually.

## Investment and Jobs

- Up to \$30-40m expected to be spent locally during construction, depending on availability of services in the region.
- Up to 200 jobs during construction.
- Approximately 10-15 long term jobs during operations.
- Local capability and jobs plan to maximise local jobs and business opportunities.

## Community

- Use of local goods and services over the project lifetime.
- Agreements with landowners allow drought proofing and greater spending.
- Plan to involve near neighbours in benefits.
- Voluntary Community Enhancement Program is proposed.
- Goldwind plans to be a long-term member of the community.



# Project Activities: Modification Applications

---

- Mod 1 – withdrawn

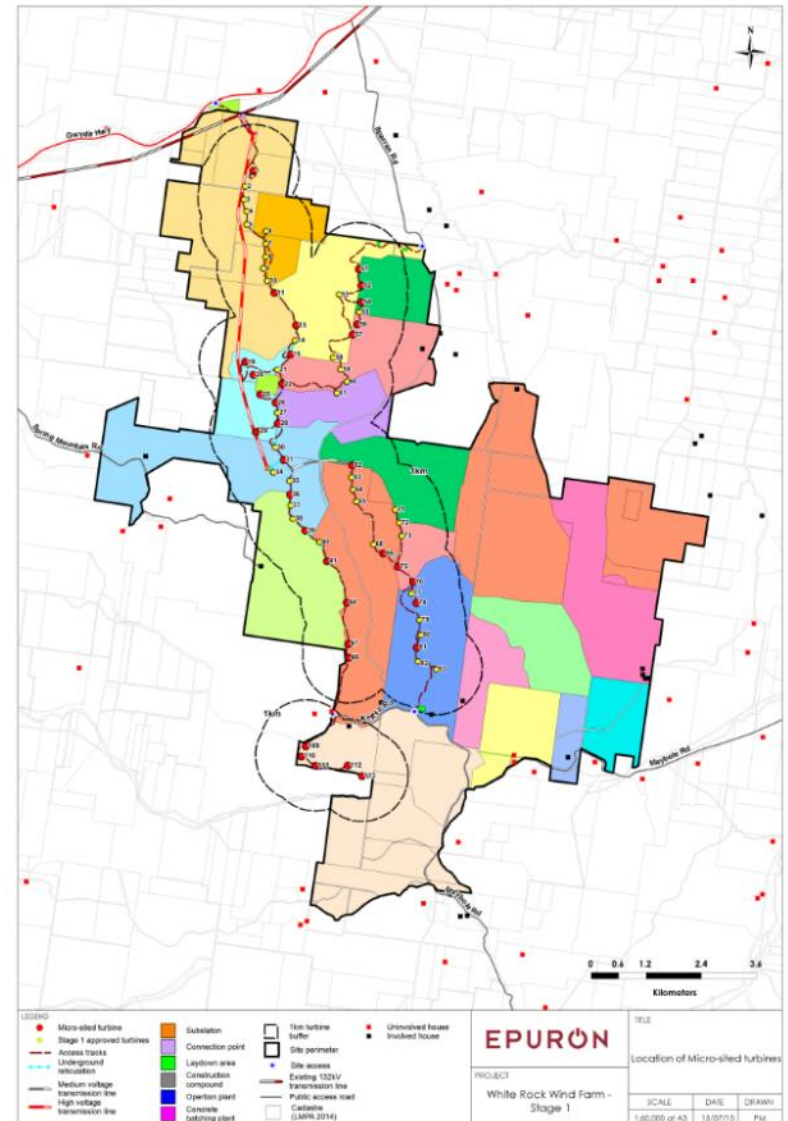
- Lodged Sept 2012 for alternative transmission line into 330kV line.
- Withdrawn Jan 2015 prior to determination
- Consequently, focussing on 132kV connection as agreed with Transgrid

- Mod 2 – approved July 2015

- Mod was an administrative amendment to the approval
  - Native Vegetation Clearing C1 – to clarify the specific vegetation permitted to be cleared in line with the original intentions.
  - Noise Conditions F6-F18 – to ensure consistency between operational noise conditions and incorporate contemporary practice and EPA advice.
- DPE regularised several other aspects
- DPE assessment indicates resulting environmental impacts would be substantially the same as approved for the original project.
- No change to approved project area or layout, maximum turbine height and no change to approved generating capacity.

# Project Activities: Detailed Design Work

- Optimisation of design for wind resource and constructability.
- Standard practice for wind farm projects.
- Micrositing of turbine sup to 100m has been occurring in accordance with Project Approval conditions.
- Further movements possible following BoP tender.
- Final turbine layout will be included in CEMP.



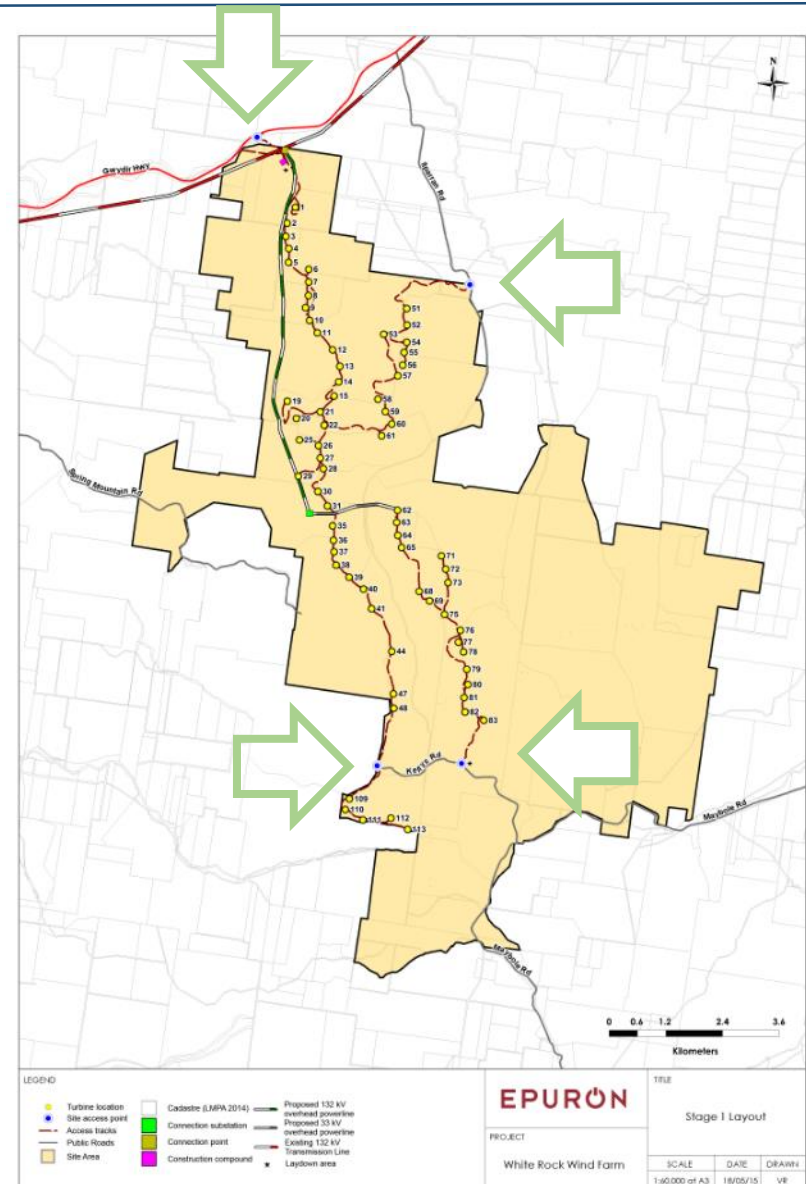
# Project Activities: CEMP

---

- Condition E20 of the Project Approval.
- Standard practice for all wind farm projects.
- Produced in consultation with local councils and other agencies.
- Requires approval by Department of Planning and Environment.
- Outlines environmental management practices and procedures for construction.
- Will include number of sub-plans:
  - Construction compound and ancillary facilities management plan;
  - Construction noise and vibration management plan;
  - Construction traffic and access management plan;
  - Construction soil and water quality management plan;
  - Construction heritage management plan;
  - Construction Flora and Fauna Management plan.

# Access and Traffic

- Three access points:
  - Gwydir Highway (main entrance)
  - Ilparran Road (East)
  - Maybole Road / Kellys Road (South)
- Majority of vehicle movements during construction for materials (gravel etc.).
- Road upgrades done in conjunction with local councils.
- Dilapidation report prior to construction.
- Turbine parts delivered through either Brisbane or Newcastle.
- Delivery route along New England Highway and through edge of Glen Innes.
- Option for a event to mark the first turbine delivery in Glen Innes – involving local schools.



# Near Neighbour Involvement

---

Distance to turbines	Number of landowners	Number of non-involved landowners	Number of involved landowners
< 1km	5	0	5
>1km < 2km	7	1	6
>2km <3km	9	6	3
>3km < 5km	17	13	4

- 17 host landowners.
- Offer of involvement to all near neighbours within 3km.
- Involvement through Near Neighbour Agreements:
  - Financial involvement;
  - Share in project benefits;
  - Some obligations under the Project Approval are waived.



# Current Consultation Activities

---

- Website, [info@whiterockwindfarm.com](mailto:info@whiterockwindfarm.com) and telephone number 1800 859 660 set up and in use.
- Revived CCC and appointed local chair.
- Positive engagement with local media outlets – articles in Glen Innes Examiner, Inverell Times and ABC New England North West.
- Briefed Adam Marshall, MP.
- Meeting with all near neighbours within 3km.
- Seeking agreements where beneficial with other neighbours.
- Sponsorship of Glen Innes Show Jumping event (October) pledged.
- Sponsorship of Gather in the Glen (October) pledged.
- Seeking to establish a shop front in Glen Innes and employment of local part-time community rep.
- Continued consultation with host landowners.
- Consultation on Design and Landscape Plan with near neighbours.

# Future Consultation Activities

---

- Continue communication with CCC.
- Offer to meet all near neighbours within 5km of the project to raise awareness and seek feedback.
- Seek further neighbour agreements where necessary or beneficial.
- Consider other local sponsorship opportunities.
- First newsletter to residents and updates in local media.
- Initiatives around maximising local capacity for businesses and jobs.
- Investigate other opportunities during the construction phase (turbine delivery event, talks with local interest groups).
- Development of existing complaints and enquiry procedures.
- Set up shop front.
- Seeking meeting with Minister Joyce.

# Questions for CCC

---

- What information would you like to have?
- What areas of the project are of most concern?
- Can WRWF assist in addressing these areas?
- How can WRWF improve information flow to the local community?
- Are there any other ways WRWF can benefit the local community?

# WHITE ROCK Wind Farm