

White Rock Wind Farm MP10_160 - Stage 1

Pre-Operations Compliance Report



Document No. WR-PM-REP-0025

Revision Date January 2018

Prepared by: Goldwind Australia Pty Ltd (GWA)

For: White Rock Wind Farm Pty Ltd (WRWFPL)



Document Revision Information

	Information
Document No.	WR-PM-REP-0025
Document Owner	Jeff Bembrick
Version:	Final
Issue Date	31/01/2018
Last Saved Date	
File Name	WRWF Stage 1 Pre-Ops Compliance Rpt 31Jan2018.docx

Document History

Rev.	Issue Date	Changes
0	31/01/2018	Final for submission to DPE

Document Approvals

The signatures of the people below indicate an understanding in the purpose and content of this document by those signing it. By signing this document you agree to this as the formal Communication Management Plan for the Project.

Role	Name	Signature	Date
Author:	Jeff Bembrick, Goldwind Australia		31-Jan-2018
Reviewed	Tom Frood, Goldwind Australia		31-Jan-2018
Approved:	Ning Chen, Goldwind Australia		31-Jan-2018

COPYRIGHT ©: The concepts and information contained in this document are the property of Goldwind Australia Pty Ltd. Use or copying of this document, in whole or in part, without the written permission of Goldwind Australia Pty Ltd, constitutes an infringement of copyright.

Distribution List

Copy	Issued to	Company/Position	Date
1	Mike Young	Department of Planning and Environment (DPE) / Director	
2	Leah Cook	DPE / Compliance Team Leader	
3	Heather Tilley	Environmental Representative (as per Condition E20)	
4	Jeff Bembrick,	Goldwind Australia/Development Compliance Manager	
5	Tom Frood	Goldwind Australia / Owners Representative	
6	Brian Hall	CECEP	

The master electronic copy is held on the SharePoint server by Goldwind Australia.

TABLE OF CONTENTS

Section	Title	Page
1	introduction	4
1.1	Purpose of this document.....	4
1.2	Details of Proponent.....	4
1.3	Project Background.....	4
1.4	Structure of this document	4
2	Overview of Project Approval Conditions and compliance requirements	6
3	Description of Stage 1 Project	7
4	Property details relevant to WRWF Stage 1 development.....	10
4.1	Land on which the project is located.....	10
4.2	Site Entry Points	11
4.3	Crown Land	11
4.4	Other land uses	12
5	Status of compliance for conditions relevant to Operations	14
5.1	Introduction	14
5.2	Procedures for maintaining compliance	20
6	Conclusion.....	22

Figures

Figure 1.1 - White Rock Wind Farm Locality Map and Stage 1 layout

Figure 4.1 – White Rock Wind Farm Property Map

Tables

Table 1.1 – Structure of Project Approval Conditions

Table 3.1 – WRWF Stage 1 As-built Turbine location details and micro-siting details

Table 4.1 – Schedule of land and location of Stage 1 infrastructure

Table 5.1 – Summary of status of pre-operations compliance for WRWF Stage 1 Approval Conditions

Table 5.2 - Environmental Audit Program – Operations Phase

Appendices

Appendix 1 – White Rock Wind Farm – Compliance Tracker Matrix

1 INTRODUCTION

1.1 Purpose of this document

This document provides the Pre-Operation Compliance Report (POCR) for Stage 1 of the White Rock Wind Farm (WRWF). The report addresses a requirement of Condition D5(c) of the Project Approval MP10_160 (as modified, MOD 5). The requirement is for reporting of the status of compliance prior to commencement of wind farm operation. The scope of compliance reported here relates to compliance with Project Approval Conditions prior to commencement of full operation of the completed WRWF Stage 1.

1.2 Details of Proponent

This report has been prepared by Goldwind Australia Pty Ltd (GWA) on behalf of the proponent, White Rock Wind Farm Pty Ltd (WRWFPL). In 2014, Goldwind Capital Australia (GWCA) acquired WRWFPL and the project from Epuron Pty Ltd which obtained the planning approval. In 2016, CECEP Wind-Power Corporation (CECWPC) acquired 75% interest in WRWF with Goldwind retaining a 25% interest. WRWFPL commenced construction of WRWF Stage 1, on 25 May 2016.

1.3 Project Background

The proposed White Rock Wind Farm (WRWF) received planning approval on 10 July 2012, from the NSW Minister for Planning under Section 75J of the Environmental Planning and Assessment (EP&A) Act, 1979. The Project Approval was subsequently modified under Section 75W, on 24 July 2015 (MP10_160 MOD 2), on 01 April 2016 (MOD 3) on 31 May 2017 (MOD 4) and on 11 October 2017 (MOD 5).

Project approval MP10_160 allows for construction of up to 119 wind turbines and associated infrastructure including a substation and 132kV transmission line to connect to TransGrid's existing 132kV Glen Innes to Inverell transmission line. White Rock Wind Farm is located between Glen Innes and Inverell and about 75 km north of Armidale. It is predominantly on privately owned rural land and minor areas of Crown Land.

While the Project Approval allows for up to 119 wind turbines to be installed, the project is being developed in stages. A staging report was prepared in response to a previous Condition B11 of the Project Approval and was submitted to Department of Planning and Environment (DPE) in November 2015, updated in April 2016 and again in November 2017. The Staging report described the proposed staging of the project implementation. Stage 1 of the project has involved the installation of up to 70 wind turbines and this report precedes the transition to the operational phase of WRWF Stage 1. The project locality and general layout (relative to Stage 1, not incl. Mod 4 area) are shown in Figure 1.1 *White Rock Wind Farm Site Locality and Project Area Plan*.

1.4 Structure of this document

Section 1 - Sets out the purpose of the POCR and document structure.

Section 2 - Provides an overview of Project Approval Conditions

Section 3 - Provides details of Stage 1 project and as-built turbine coordinates.

Section 4 - Provides details of the properties associated with the Stage 1 project

Section 5 - Summarises the status of compliance for each of the Project Approval Conditions.

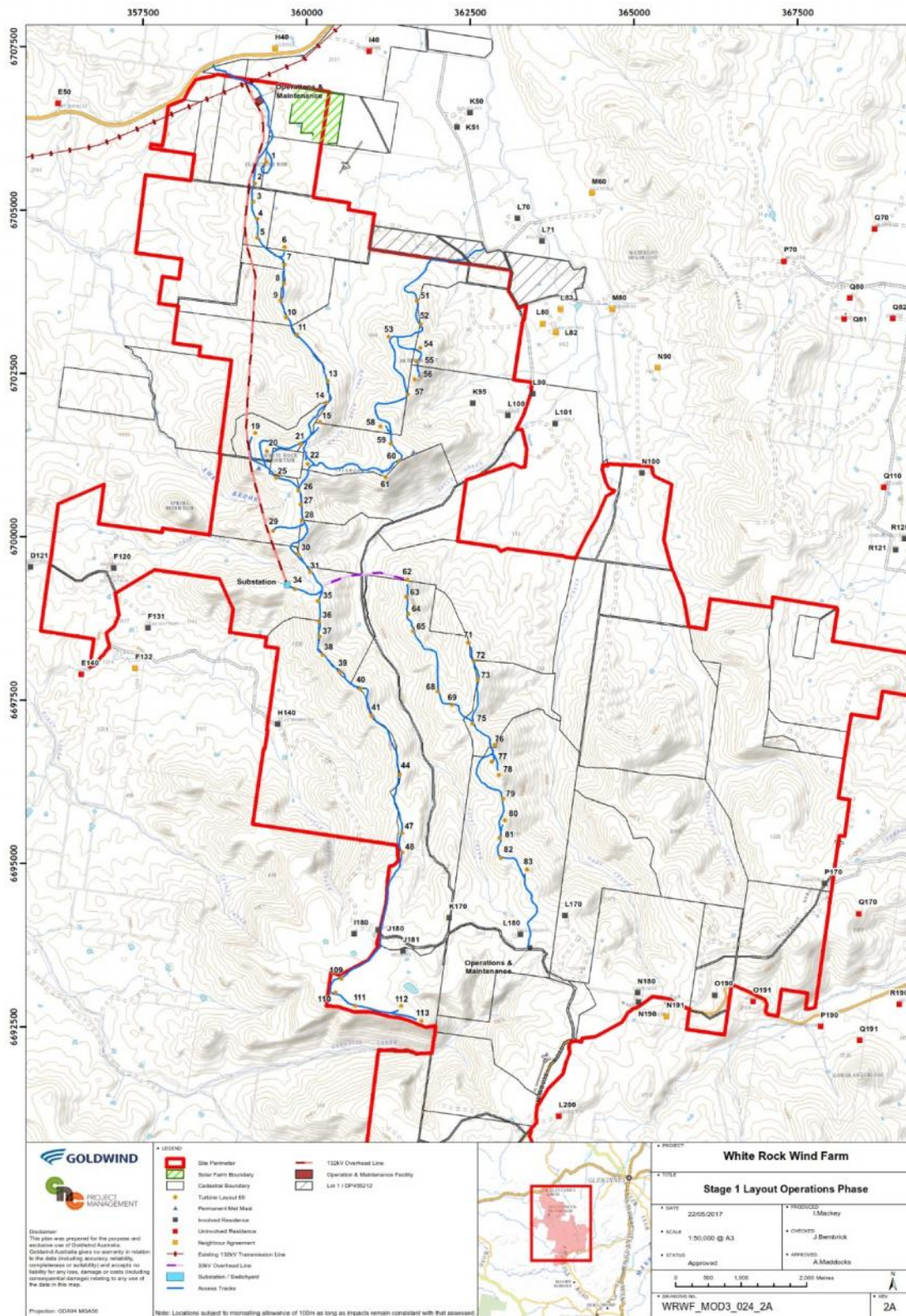
Section 5 - Outlines the key compliance matters relating to the operations phase.

Section 6 - Lists the conclusions of the Pre-Operations Compliance Report.

Section 7 - Lists relevant references for preparation of this POCR.

Appendix A – Compliance Tracking Matrix – Status of compliance with Project Approval Conditions

Figure 1.1 White Rock Wind Farm Locality and Stage 1 layout (not incl. Mod 4 area)



2 OVERVIEW OF PROJECT APPROVAL CONDITIONS AND COMPLIANCE REQUIREMENTS

The Project Approval (July 2012), as modified on 24 July 2015 and 01 April 2016, includes Conditions grouped in Schedules A to G, as listed below. A number of the original conditions were deleted, varied or updated by DPE for the reasons described in the DPE Assessment Reports for the respective modifications (MOD 2, MOD 3, MOD 4 and MOD 5).

Table 1.1 – Structure of Project Approval Conditions (MOD 5)

Part	From	To	Conditions
Schedule A	NA	NA	Land description and Project Items
	NA	NA	Definitions
Schedule B	B1	B18	Administrative Conditions
Schedule C	C1	C34	Environmental Performance
Schedule D	D1	D08	Community Information Reporting & Auditing
Schedule E	E1	E22	Construction Environmental Management
Schedule F	F1	F19	Operational Environmental Management
Schedule G	G1	G12	Additional Procedures
Appendices 1 to 3			
Appendix 1	1	2	1 - Project Layout
	Map	Table	2 - Schedule of Land
Appendix 2	(a)	(f)	Background Noise Survey and Verification Report
Appendix 3	Part A	Part B	Noise Compliance Assessment
			Part A <ul style="list-style-type: none"> • Tonality • Low Frequency Noise Part B <ol style="list-style-type: none"> 1. Applicable meteorological conditions – wind turbines 2. Applicable meteorological conditions – Other facilities

Schedule D, Condition D5(c) requires the proponent to provide reporting of compliance status including Pre-Construction and Pre-Operations Compliance Reports. This report documents the proponent's Pre-Operation Compliance Report for WRWF Stage 1 development.

Appendix A provides a summary of status of compliance for each of the Project Approval Conditions.

3 DESCRIPTION OF STAGE 1 PROJECT

Stage 1 of the WRWF project involves the installation and subsequent operation of up to 70 Goldwind wind turbines and associated infrastructure.

The project locality and general layout are shown in Figure 1.1 *White Rock Wind Farm Site Locality and Project Area Plan* as included in the Stage 1 OEMP (ERM September 2017) approved by DPE on 14 September 2017.

Components for Stage 1 include:

- 70 wind turbines, Model GW121 2.5MW – Approximately 89m hub height
- The turbine rotors are approximately 121 metres. Maximum tip height is less than 150 metres.
- Hardstands at each turbine site providing a platform for a large crane for maintenance
- Kiosk type step-up 33kV transformers and coolers located at the base of each tower
- 33kV cables and section of 33kV overhead line linking the wind turbines to the substation
- Access tracks from public roads to the turbine sites and substation
- 33kV/132kV substation and 132kV switchyard south of White Rock Mountain
- Approximately 8km of 132kV double circuit transmission line linking to an existing 132kV line
- Operations and Maintenance facility near the northern site entrance and southern entry
- Two permanent meteorological masts MM2025 and MM5960 (Approximately 89m height) and
- Temporary construction facilities have been decommissioned and the sites are being rehabilitated.

Construction commenced on 25 May 2016 and installation of all 70 wind turbines was completed in September 2017. Commissioning has continued through to late January 2018. The wind farm will operate for approximately 25 years. Decommissioning of the Stage 1 wind turbines would follow cessation of wind farm operation.

Table 3.1 lists the location of the Stage 1 turbines including, the approved locations (EA, 2011), the as-built location and, where applicable, the distance that turbines have been micro-sited. Only 34 turbine locations have been micro-sited and none have been micro-sited by more than 100 metres, i.e. all are located within the 100 metre micro-siting allowance permitted by the Project Approval.

Annexure I of the Stage 1 CEMP addressed the requirements of Condition C4: *“the Proponent shall identify the proposed turbine locations in the CEMP, and demonstrate how those locations will not give rise to increased landscape, vegetation, cultural heritage, visual amenity, shadow flicker, noise, fire risk or aviation impacts when compared with the approved locations.”*

Modification Application (MOD 4) for an alternative grid connection at 330kV (that would form part of Stage 2) was approved on 31 May 2017. A further modification (MOD 5) was granted on 11 October 2017 to allow subdivision of two substation sites for the project.

Table 3-1 – WRWF Turbine location details and distance for micro-siting

Turbine No.	Approved Turbine Location (EA, 2011)		Stage 1 Turbine Location (As-Built)		Micro-sited distance (m)	Elevation	
	East	North	East	North		As-built (m)	Difference (m)
1	359377	6705707	359386.4	6705738.4	32.8	1029.1	0.0
2	359210	6705405	359210.0	6705405.0	0.0	1009.9	0.0
3	359186	6705126	359186.0	6705126.0	0.0	1031.4	0.0
4	359247	6704867	359247.0	6704867.0	0.0	1043.1	0.0
5	359243	6704577	359243.0	6704577.0	0.0	1076.8	0.0
6	359665	6704433	359665.0	6704433.0	0.0	1082.9	0.0
7	359664	6704162	359664.0	6704162.0	0.0	1110.5	0.0
8	359658	6703876	359658.0	6703876.0	0.0	1144.2	0.0
9	359600	6703621	359600.0	6703621.0	0.0	1150.7	0.0
10	359686	6703353	359686.0	6703353.0	0.0	1123.8	0.0
11	359812	6703071	359852.0	6703092.0	45.2	1105.3	1.7
13	360284	6702372	360324.0	6702385.0	42.1	1154.0	2.6
14	360298	6702056	360298.0	6702056.0	0.0	1180.2	0.0
15	360118	6701785	360204.0	6701757.0	90.4	1238.8	12.0
19	359253	6701580	359215.0	6701587.0	38.6	1266.3	-3.6
20	359422	6701317	359393.0	6701309.0	30.1	1323.8	-1.9
21	359909	6701419	359909.0	6701419.0	0.0	1280.8	0.0
22	359993	6701137	360020.0	6701111.0	37.5	1303.9	-2.2
25	359469	6700831	359538.3	6700902.2	99.4	1293.7	24.9
26	359906	6700772	359873.0	6700707.0	72.9	1270.2	-4.4
27	359908	6700489	359908.0	6700489.0	0.0	1267.2	0.0
28	359899	6700199	359928.0	6700252.0	60.4	1263.1	0.0
29	359455	6700147	359488.3	6700089.9	66.1	1232.6	1.3
30	359863	6699736	359863.0	6699736.0	0.0	1194.3	0.0
31	360061	6699431	360052.0	6699458.0	28.5	1180.8	-1.8
34	359822	6699193	359822.0	6699193.0	0.0	1193.6	0.0
35	360175	6699010	360175.0	6699010.0	0.0	1224.1	0.0
36	360166	6698737	360188.6	6698709.0	36.0	1239.5	1.1
37	360201	6698468	360201.0	6698468.0	0.0	1235.6	0.0
38	360248	6698187	360248.0	6698187.0	0.0	1219.7	0.0
39	360513	6697920	360518.6	6697927.0	9.0	1242.0	0.0
40	360825	6697677	360825.0	6697677.0	0.0	1240.7	0.0
41	360956	6697318	360993.0	6697262.0	67.1	1226.4	5.8
44	361405	6696366	361420.6	6696362.0	16.1	1233.1	0.0
47	361431	6695495	361459.0	6695467.9	39.0	1252.5	0.4
48	361440	6695213	361465.0	6695164.0	55.0	1276.7	1.0
51	361737	6703602	361682.0	6703607.0	55.2	1130.9	3.4
52	361753	6703254	361741.8	6703252.0	11.4	1155.2	2.2

Turbine No.	Approved Turbine Location (EA, 2011)		Stage 1 Turbine Location (As-Built)		Micro-sited distance (m)	Elevation	
	East	North	East	North		As-built (m)	Difference (m)
53	361251	6703057	361251.0	6703057.0	0.0	1166.5	0.0
54	361725	6702938	361737.0	6702891.0	48.5	1217.7	3.4
55	361686	6702678	361686.0	6702678.0	0.0	1237.1	0.0
56	361645	6702414	361651.0	6702407.0	9.2	1207.8	-1.5
57	361570	6702146	361550.0	6702184.0	42.9	1172.4	7.5
58	361127	6701687	361127.0	6701687.0	0.0	1254.4	0.0
59	361287	6701426	361287.0	6701426.0	0.0	1269.6	0.0
60	361423	6701163	361423.0	6701163.0	0.0	1289.2	0.0
61	361206	6700913	361206.0	6700913.0	0.0	1270.2	0.0
62	361548	6699357	361542.9	6699344.0	14.0	1220.1	1.3
63	361525	6699085	361525.0	6699085.0	0.0	1222.9	0.0
64	361552	6698814	361552.0	6698814.0	0.0	1233.5	0.0
65	361628	6698554	361628.0	6698554.0	0.0	1255.6	0.0
68	362003	6697628	362003.0	6697628.0	0.0	1263.0	0.0
69	362176	6697369	362218.0	6697426.0	70.8	1293.1	-1.3
71	362470	6698378	362470.0	6698378.0	0.0	1246.6	0.0
72	362561	6698100	362561.0	6698100.0	0.0	1262.3	0.0
73	362612	6697810	362612.0	6697810.0	0.0	1279.1	0.0
75	362546	6697147	362534.5	6697141.0	13.0	1273.0	1.5
76	362880	6696841	362872.9	6696807.0	34.7	1320.3	3.8
77	362829	6696560	362829.0	6696560.0	0.0	1330.6	0.0
78	362954	6696287	362938.3	6696353.0	67.8	1349.5	11.8
79	363005	6695984	363005.0	6695984.0	0.0	1286.2	0.0
80	363030	6695661	363030.0	6695661.0	0.0	1324.9	0.0
81	362982	6695387	362948.8	6695388.0	33.2	1328.6	-1.3
82	362969	6695085	362969.0	6695085.0	0.0	1368.3	0.0
83	363366	6694909	363366.0	6694909.0	0.0	1358.9	0.0
109	360437	6693254	360532.0	6693239.0	96.2	1353.2	0.7
110	360405	6692984	360440.0	6693021.0	50.9	1345.1	2.1
111	360810	6692794	360744.0	6692817.0	69.9	1343.8	0.4
112	361382	6692765	361447.0	6692821.0	85.8	1337.0	-7.8
113	361754	6692603	361755.0	6692593.0	10.0	1336.5	1.4

The Project Approval allows for micro-siting of up to 100m. All turbines subject to micro-siting have been moved less than 100m from the locations presented in EA, 2011. Appendix I of the Stage1 CEMP provides a review of the changes in impacts arising from the micro-siting.

4 PROPERTY DETAILS RELEVANT TO WRWF STAGE 1 DEVELOPMENT

4.1 Land on which the project is located

This section confirms that the project is located on lands consistent with those described in the Project Approval. Arrangements are in place for access to the land through:

- Lease agreements with landowners;
- agreements for access across Crown lands; and
- neighbour agreements have been formed between WRWFPL and some of the landowners for properties neighbouring the Stage 1 project. The neighbour agreements give rise to changed responsibilities for WRWFPL in respect of impacts addressed by the various approval conditions.

Table 4.1 lists the land that is defined in the Project Approval, Appendix 1, *Schedule of Land*, relative to Stage 1 but not including lands included for Mod 4. It also shows the location of infrastructure for Stage 1 with respect to the land to which the Project Approval relates.

Table 4.1 Schedule of Land and location of Stage 1 infrastructure

Lot(s)	DP	Stage 1 Turbine number(s)	Other Permanent Facilities for Stage 1	Access Tracks and 33kV cabling
1	1005607	Nil		
1, 2	1061812	26, 27, 28		Yes
2, 7	1130567	Nil		
2, 4	225300	62		Yes
2	228716	38		Yes
1, 2	600093	Nil		
116	705152	Nil		
1, 2	714164	15, 51, 52, 53, 54, 55, 58		Yes
157	726527	Nil		
78	753260	Nil	O&M Building, 132kV line	Yes
121, 122	753260	2, 3, 4, 5, 8, 10	132kV line	Yes
90, 119, 134, 136	753260	Nil	132kV line	Yes
144	753260	25, 29	132kV line, Met Mast 2025	Yes
153	753260	30, 31, 34 - 37, 39	Substation, 132kV line	Yes
91, 94	753270	Nil		
49, 65, 75, 76, 77, 101, 103, 111	753292	109 - 113		Yes
107	753292	40, 41, 44, 47, 48, 63, 64, 65, 68, 69, 71		Yes
30, 31, 33, 124	753319	1, 6, 7, 9		Yes
1	455212	Nil		Yes - Access
9	778366	Nil		
1	840208	22, 56, 57, 59, 60, 61	Met Mast 5960	Yes
1, 3, 7	865325	Nil		

Lot(s)	DP	Stage 1 Turbine number(s)	Other Permanent Facilities for Stage 1	Access Tracks and 33kV cabling
1, 2	873080	11,13, 14, 19, 20, 21	132kV line	Yes
1, 2	883837	Nil		
1	1184223	Nil		
1, 2	1187044	72, 73, 75 - 83		Yes

4.2 Site Entry Points

There are five site entry points for the WRWF Stage 1 project as follows:

- Northern entry point from Gwydir Highway to the Operations and Maintenance Building and Turbine 1 to Substation. This entry has been upgraded in accordance with a Works Agreement Deed between RMS and WRWFPL.
- Northeastern entry from Ilparran Road to Construction site office and Turbines 51 to 61
- Southern entry from Kelleys Road to Turbines 62 to 83
- Southern entry from Kelleys Road to Turbine 48 through to Substation and northern sites
- Southern entry from Kelleys Road to Turbines 109 to 113

4.3 Crown Land

The Main northern entry from Gwydir Hwy passes through a Crown Land Reserve, Lot 7001/DP93978 to reach privately owned land that is part of the WRWF Project Area. WRWFPL has obtained Licence RI 523495, (under Section 34A of the Crown Lands Act 1989) in April 2014 for access across the Crown Land. Crown Lands has provided approval for preliminary construction works to proceed prior to completion of the entry upgrade.

Sections of Crown Lands that are affected by the project include those in the *Table 4.2* below that are addressed by the relevant licences.

Table 4.2 Crown Land details

Licence/Document Number	Description	Lot	DP	Purpose of Use
LI 523495	Part of	7001	93978	Access
LI 558270 / LI 569743	land located near	2	1061812	Electricity Generation and Supply (operation of a Wind Farm – Including the construction/ installation of the associated infrastructure and Works)
LI 558270 / LI 569743	land located near	153	753260	
LI 558270 / LI 569743	land located near	78	753260	
LI 558270 / LI 569743	land located near	2	873080	
LI 563196	Part of Crown Road intersecting	1	455212	Access
Right of Carriage Way 20 Wide	land located on	7001	93978	Right of Carriage Way
Right of Carriage Way 20 Wide & Right of Carriage Way Variable Width	land located on	157	726527	Right of Carriage Way

Details of the conditions of use are included in each Crown Land Licence document. These should be referred to prior to undertaking any works within Crown Land and any approvals (as required) obtained from the Crown Lands Department. No activities are to occur on Crown Land that are outside the scope of the agreements with Crown Lands Department.

4.4 Other land uses

The project is predominantly on privately owned land that is used for pastoral purposes. The use for the wind farm is enabled through agreements with landowners. The Lease agreements with landowners include provisions for decommissioning (as required by Condition D8). The provisions have been approved by DPE.

White Rock Solar Farm is partly located within WRWF Project area, on part of Lot 30/DP753319. The area of the solar farm (other than the shared infrastructure with WRWF) is excluded from EPL 20665. The Solar Farm has been installed and will commence operation in the first half of 2018.

A small quarry has also been established to the east of White Rock Mountain and south of Turbine 22. The quarry was arranged by a landowner and is referred to as Hugans Pit. It is subject EPL 20869 and has been excised from EPL 20665. The quarry has supplied gravel to both WRWF and WRSF.

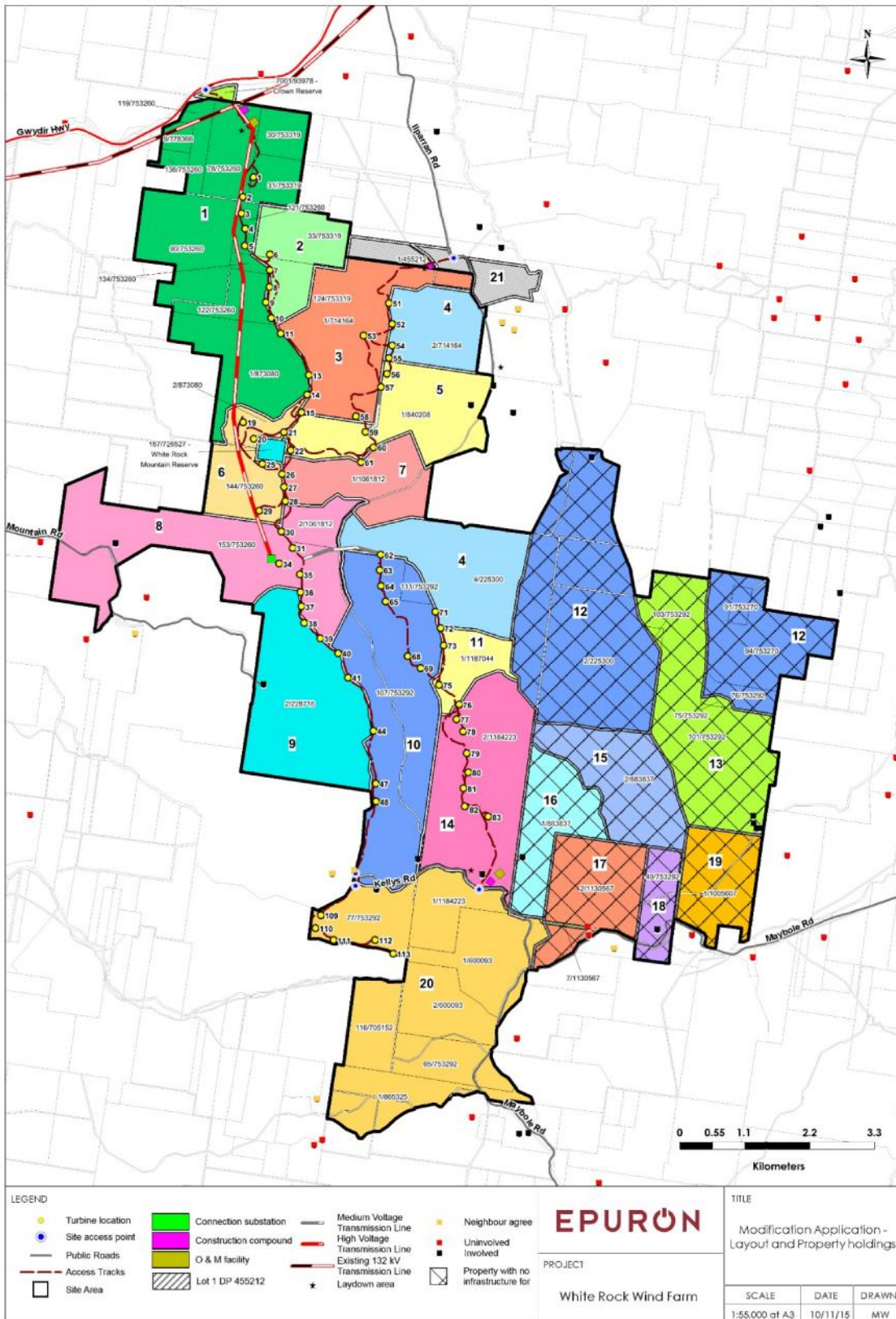


Figure 4.1 – White Rock Wind Farm Stage 1 - Property Map

5 STATUS OF COMPLIANCE FOR CONDITIONS RELEVANT TO OPERATIONS

5.1 Introduction

Section 2, Table 1.1, provided an overview of the structure of Project Approval Conditions. A pre-construction compliance report was submitted in April 2016 and showed the status of compliance with conditions to be addressed prior to construction commencing. Updates of the project's compliance with conditions is supplied to DPE on a quarterly basis. This report focuses on compliance with conditions relevant to transition from the construction phase to operations phase for Stage 1 but also provides an update on compliance with conditions relevant to the construction phase.

Some of the conditions do not require pre-operation responses but relate to a future phase or matters that may arise in the future. This report records the status of compliance with conditions for the pre-operation phase for Stage 1 to indicate the preparedness to proceed with the wind farm operation. Appendix A provides a Compliance Tracking Matrix for the Project Approval Conditions. All pre-operation compliance requirements have been addressed as indicated in Section 5.1, *Status of pre-operation compliance for WRWF Stage 1*.

Table 5.1 sets out the status of compliance with the Minister's Conditions of Approval (MCoA) in respect of WRWF Stage 1 and pre-operation compliance requirements. Some of the MCoA relate to the construction phase while a range of the MCoA relate to requirements during operations or the future decommissioning phase and will be addressed at the appropriate phase of the development as indicated below. The Compliance Tracking Matrix that forms part of the Compliance Tracking Program is provided as Appendix A and provides more detail of the status of the individual compliance requirements.

Table 5.1 – Summary of status of pre-operations compliance for WRWF Stage 1 Approval Conditions

MCoA	Summary of Requirement	Brief Proponent Response	Status
Schedule A - Land description and Project Items			
	Lands where the project is to be located	See Section 4 of this report	Complies
Schedule B – Administrative Conditions			
B1	Comply with EA, 2011 and Project Approval Conditions	Generally in accordance with the EA	Complies
B2	Inconsistency from B1	Noted	Noted
B3	Comply with requirements of Secretary	Noted	Complies
B4	Documents under PA publicly available on request	Relevant documents on web-site	Noted
B5	Approval lapse time 10/7/2017	Commenced by 25/5/2016	Complies
B6	Not exceed 119 turbines	Stage 1 - 70 turbines	Complies
B7	Decommission after 12 months if not operating	Future operations phase requirement	Not applicable
B8	Evidence of decommissioning requirements in leases	Submitted to DPE. DPE has approved the lease provisions.	Complies

MCoA	Summary of Requirement	Brief Proponent Response	Status
B9	Ensure that all licences, permits and approvals obtained	EPL 20665 issued 27/04/16 and varied for Operations	Complies
	Access upgrade works	Complete	Complies
	Crown Land Access	Licences for WRWF activities	Complies
	Local Road upgrades (S138)	Stage 1 upgrades complete	Complies
B10	EP&A Act S75S(2)(b)	Construction certificates	Complies
B11	Staging allowed	Stage 1 Constructed	Complies
B12-14	Deleted		
B15	Disputes may be referred to Secretary	Future requirement, if needed	Noted
B16	Notification of Department	Notified DPE pre-construction Notification pre-operation	Notification with POCR
B17	Updating and Staging of Strategies, Plans or Programs	Updated staging report submitted to DPE even though not required.	Complies
B18	Subdivision allowed for two substation sites	WRWF Substation subdivision process commenced. 330kV Substation later, part of Stage 2.	Complies
Schedule C - Environmental Performance			
C1 (a)	Minimise clearing of native vegetation	Addressed in CFFMP of CEMP	Complies
C1 (b)	Clear <28Ha RG-MG EEC	Addressed in CFFMP of CEMP	Complies
C2	Utilise cleared material in rehabilitation.	Addressed in CFFMP of CEMP Rehabilitation in progress. Works to reduce piles of cleared material in progress.	Complies
C3	Locate turbines >30m from HBTs that are potential habitat	Addressed in CFFMP of CEMP	Complies
C4	Demonstrate how micro-sited turbine locations comply.	Appendix I of approved CEMP	Complies
C5	Avoid native vegetation disturbance	Addressed through design and in CFFMP of CEMP and EWMS	Complies
C6	Prepare and submit BBAMP for approval	BBAMP approved by DPE. Monitoring from November 2017.	Complies
C7	Prepare and Submit Biodiversity Offset Package (BOP)	BOP submitted to OEH December 2016. Under review.	Under review by OEH
C8	Comply with S120 POEO Act	CSWQMP in Approved CEMP	Complies

MCoA	Summary of Requirement	Brief Proponent Response	Status
C9	Waterway crossings	CSWQMP in Approved CEMP	Complies
C10	Dangerous Goods	Addressed in Approved CEMP	Complies
C11	Aviation Obstacles/Hazards Prior to construction, consult with Aerodrome operators, AirServices Australia and Aerial Agriculture Association of Australia	Consultation completed by aviation consultant. Risk assessment completed against AirServices procedures. Mitigation included in CEMP.	Complies
C12	Notifications pre-construction and as-built	Notifications of as-built details completed on 11/7/2017.	Complies
C13	Aerial Agriculture spraying	Neighbours are set back from Turbine sites and no impact anticipated.	Complies
C14	Bushfire Risk	Updated BFRM Plan in OEMP	Complies
C15	BF Operations consultation	BFRM reviewed by RFS	Complies
C16	If radio or telecommunications services disrupted, then proponent is to make good	Program to address C16 Provided VAST and Fibre Solutions. Allowed Vodaphone access to met mast.	Complies
C17	Noise Overhead 132kV line	No impacts	Complies
C18	Waste management	Section 5.10 OEMP	Complies
C19	Recycling	CEMP and OEMP	Complies
C20	Waste Classification Guidelines	CEMP and OEMP	Complies
C21	No Green waste burnt onsite	CEMP and OEMP	Complies
C22	Utilities and Services	Contractors identified these pre-construction. No impacts	Complies
C23	Visual Assessment	Consultation undertaken	Complies
C24	Landscaping requests	Potential applicants were notified of C24 provisions and process in letter sent out on 8 November 2017.	Complies
C25-26	Deleted		NA
C27	Shadow Flicker	Assessed as <30hrs/annum	Complies
C28	Minimize visual impacts for turbines and ancillaries – No advertising signs or logos	Requirements addressed in DALP. Turbines and ancillaries comply.	Complies
C29	Night lighting	Contractors to confirm in design	Complies
C30	Design and Landscape Plan	Approved by DPE March 2016	Complies

MCoA	Summary of Requirement	Brief Proponent Response	Status
		O&M Building Landscape Plan updated and submitted to DPE	
C31	Crown Lands	Agreements obtained	Noted
C32	Crown Lands	Licences obtained	Complies
C33	Trigonometric Reserves	No impacts	Complies
C34	Dept Min Resources	No impacts	Complies
Schedule D - Community Information Reporting & Auditing			
D1	Community Consultative Committee	Established, operating. Next meeting 8 Feb 2018	Complies
D2	Complaints/Enquiries	Outlined in OEMP	Complies
D3	Complaints Management System	System has been established	Complies
D4	Provision of electronic information	Items (a) to (f) on website.	Complies
D4A	Revision of Strategies, Plans and Programs	No requirements triggered yet	Complies
D5	Compliance Tracking Program	Approved DPE. Quarterly updates provided to DPE	Complies
D5(c)	Pre-Construct Compliance Report	Submitted April 2016	Complies
D5(c)	Pre-Operation Compliance Report	This report	Complies
D6	Incident Reporting	In OEMP and CTP	Complies
D7	Meet requirements of Secretary for incidents	Addressed in OEMP	Complies
D8	Op Perform Audit Report	<15months post construction	Future action by May 2019
Schedule E – Construction Environmental Management (less relevant for Operations)			
E1	Air Quality	In approved CEMP	Complies
E2	Heritage management	CHMP in approved CEMP	Complies
E3	Chance Finds – Heritage	CHMP in approved CEMP	Complies
E4	Chance finds – Aboriginal	CHMP in approved CEMP	Complies
E5	Construction – Noise and Vibration – incl. OOHV	CNVMP in approved CEMP	Complies
E6 – E8	Deleted		NA
E9	Time for Blasting	CNVMP in approved CEMP	Complies
E10	Blasting criteria	CNVMP in approved CEMP	Complies

MCoA	Summary of Requirement	Brief Proponent Response	Status
E11 – E12	Deleted		NA
E13	Access to property	Noted, Subject to agreements	Complies
E14	Damage to property	Noted, Subject to agreements	Complies
E15	Soil and Water Management	CSWQMP in approved CEMP	Complies
E16	Use on-site water	CSWQMP in approved CEMP	Complies
E17	Road Dilapidation Survey	Surveys complete, Condition restored	Complies
E17A	Road Upgrades (Mod 4)	Not triggered yet	Future
E18	Ancillary Facilities siting criteria	In CCAFMP, Approved CEMP	Complies
E19	Rehabilitate Ancillaries	In progress, as usage complete	Complies
E20	Environmental Representative	Approved by DPE and engaged. Regular inspection and reporting	Complies
E21	CEMP	Approved by DPE	Complies
E22	CEMP Sub-Plans	In CEMP, approved by DPE	Complies
Schedule F - Operational Environmental Management			
F1	Safety Management System	Complete	Complies
F2	Assessment, existing quality TV/ radio reception (receivers <5km)	Assessed and corrective actions arranged	Complies
F3	Operational impacts TV/radio	Pre-emptive corrective actions taken already	Complies
F4	Rehabilitation watercourses	In progress, well advanced.	Complies
F5	Revegetation/Rehabilitation	Program prepared and implemented – Rehabilitation in progress – Soil Conservation Service (SCS) acts as expert verifying revegetation status.	Complies
F6	Background Noise and Predicted Noise Report required	Complete – Reports submitted to DPE and EPA in May 2017	Complies
F7	Operational noise criteria	Compliance Monitoring within 3 months of commencement of operations, anticipate 2018 Q1.	Test Plan with DPE and EPA
F8	Ancillary facility noise criteria	Satisfactory performance	Complies
F9	Operating Conditions (Noise)	Noise Compliance monitoring once operational. Plan submitted to DPE/EPA	Complies

MCoA	Summary of Requirement	Brief Proponent Response	Status
F10-18	Deleted following Mod 2	NA	NA
F19	Operation EMP	OEMP Approved by DPE 14/9/17	Complies
F20	Deleted following Mod 2	NA	NA
Schedule G - Additional Procedures			
G1	T32, 33 and Property 'Tryagain'	Property acquired	Complies
G2	No longer applicable	Property acquired	Complies
G3	No longer applicable	Property acquired	Complies
G4	No longer applicable	Property acquired	Complies
G5	No longer applicable	Property acquired	Complies
G6	No longer applicable	Property acquired	Complies
G7	No longer applicable	Property acquired	Complies
G8	Decommissioning	Addressed by DRP	Future action
G9	Non-operational turbine	Addressed by DRP	Future action
G10	Decommissioning and Rehabilitation Plan (DRP)	Approved by DPE on 26 April 2016	Complies
G11	Decommissioning Road Dilapidation	Due pre-decommissioning	Not triggered yet
G12	Decommissioning EMP	Due pre-decommissioning	Not triggered yet
Appendices 1 to 3			
Appendix 1	1 – Map – Project layout	Figure 1.1 – Stage 1 layout. Detail plans in Stage 1 OEMP	Complies
	2 - Schedule of Land	Table 4.1 – Schedule of land for Stage 1 development	Complies
Appendix 2	Background Noise Survey and Verification Report	Complete. Background Noise and Verification Report for Stage 1 submitted to DPE May 2017.	Complies
Appendix 3 - Noise Compliance Assessment			
Part A	<ul style="list-style-type: none"> Tonality Low Frequency Noise 	Relevant to noise compliance assessment	Complies
Part B	<p>Applicable meteorological conditions – wind turbines</p> <p>Applicable meteorological conditions – Other facilities</p>	Relevant to background noise survey and compliance assessments	Complies

5.2 Procedures for maintaining compliance

The Table above provides an overview of the pre-operation compliance with Project Approval conditions relevant to operation phase of WRWF Stage 1. The Stage 1 project requires regular reviews of compliance and performance and the compliance status updated. Compliance reviews for Environment Protection Licence 20665 are undertaken as part of the WRWF environmental management system and in conjunction with annual reporting to EPA (First Return in 2017).

Condition D5 requires a Compliance Tracking Program (CTP) that has been developed for the Stage 1 project and was approved by DPE in December 2015. The Compliance Tracking Matrix that forms part of the approved CTP provides more details of the status of compliance for individual conditions and a current version is appended to this report.

The approved ER has been engaged by WRWFPL and undertakes regular reviews of the project compliance with the Project Approval, effectiveness of management measures and where necessary advises improvements to achieve performance objectives. The ER has reviewed the performance required by the Project Approval during construction and as necessary has sought improvements through monthly reports. The ER will continue to monitor performance and compliance during the wind farm operation.

During operation, as occurred for construction, WRWFPL will provide periodic summary reports on compliance status to the Secretary, at intervals of not more than 3 months. The approved ER will also undertake regular reviews of project performance and compliance with the Project Approval.

The OEMP sets out the processes for ensuring all employees, contractors and sub-contractors are aware of:

- Project approval and EPL conditions and associated compliance requirements;
- Relevant environmental risks;
- Relevant procedures and controls to mitigate environmental risks; and
- Monitoring and reporting requirements.

The WRWF Stage 1 OEMP also sets out the process for rectifying any non-compliance during operation whether identified from inspection, auditing, compliance reviews or incident management processes. The process aims to make good any adverse impacts and to ensure that measures are integrated in the project management to avoid or mitigate potential for recurrence.

Condition D7 (shown below) also includes requirements for addressing the cause(s) or impacts of any incident as they relate to the approval and reported in accordance with Condition D6.

Condition D7 *The Proponent shall meet the requirements of the Secretary to address the cause(s) or impacts of any incident, as they relate to this approval, reported in accordance with condition D6 of this approval, within such period as the Secretary may require.*

The proponent will comply with the requirements of the Secretary in the specified timeframe. The proponent will thoroughly investigate all incidents arising from the project to identify causes, potential for recurrence and as necessary, any improvements in controls to avoid recurrence.

In addition, WRWFPL will continue a program of environmental audits that commenced during construction and will continue through operation and decommissioning to cover the full life of the project.

The audit program will include internal and external audits as described in Table 5.2 below. The scope of the audits will vary during the course of the project relative to the activities occurring, risks arising and effectiveness of management measures. More details of the audit process are shown in the Compliance Tracking Program approved by DPE in December 2015.

Table 5.2 – WRWF Stage 1 Environmental Audit Program – Operations phase

Timing	Internal/ External	Objective (or completion status)
Operations phase – Commences when all turbines and substation installed – Wind Farm operating		
1 months after Operations commencement	Internal	Audit Construction completion and initial Operations and Maintenance activities, Compliance with OEMP and EPA Licence.
6 months after Operations commencement	Internal	Ensure that post construction site rehabilitation has been adequately addressed. Audit compliance of operations and whether environmental objectives are being achieved.
12 months after Operations commencement and thereafter every 2 years	External	Full external/independent audit of first 12 months of operation. Audit against Project Approval, EPA Licence and OEMP. The audit will address the requirements of Project Approval <u>Condition D8</u> .
24 months after Operations commencement and thereafter every 12 months	Internal	Internal audit of second 12 months of operation. Audit against Project Approval, EPA Licence and OEMP. Align timing with EPA Licence Annual Return
Decommissioning and Site Rehabilitation		
On completion of decommissioning	External	Full external/independent audit against Project Approval, EPA Licence and Decommissioning and Rehabilitation Plan.

6 CONCLUSION

This report provides details of the pre-operation compliance status of the WRWF Stage 1 project with Project Approval MP10_160 MOD 5, as required by Condition D5(c).

WRWF Stage 1 has been implemented generally in accordance with the EA and in accordance with the conditions of this approval.

The WRWF Stage 1 comprises the permanent components described in the EA at the locations described in the EA and on the lands described in Appendix 1 of the Project Approval. The as-built locations of turbines are provided in Table 3.1.

All requirements of conditions of approval that need to be addressed prior to commencement of operation have been complied with.

The report has identified that all pre-operation compliance requirements have been met. Further requirements need to be addressed for commencement of operations and completion of construction activities including site rehabilitation and revegetation.

Appendix 1 – Compliance Tracking Matrix

The Tables in Appendix 1 provide the status of compliance with each of the Conditions of Project Approval as at, 31 January 2018.

White Rock Wind Farm - Project Approval MP 10_0160 (modified 24Jul2015 MOD2, 01Apr2016 MOD3, 31May2017 MOD4 & 11Oct2017 MOD5)

Proponent: White Rock Wind Farm Pty Ltd

Compliance Tracker Matrix – Review: 31 January 2018. For submission DPE Compliance Team: compliance@planning.nsw.gov.au (Copy ER)

CONTENTS

Item	From	To	Conditions	Most recent review date			Reviewer
Schedule A	-	-	Land and Project Items	31	Jan	2018	GWA Dev Compliance Mgr
	-	-	Definitions (updated MOD 5)	31	Jan	2018	GWA Dev Compliance Mgr
Schedule B	B1	B18	Admin Conditions	31	Jan	2018	GWA Dev Compliance Mgr
Schedule C	C1	C34	Environmental Performance	31	Jan	2018	GWA Dev Compliance Mgr
Schedule D	D1	D08	Community Information Reporting & Auditing	31	Jan	2018	GWA Dev Compliance Mgr
Schedule E	E1	E22	Construction Environmental Management	31	Jan	2018	GWA Dev Compliance Mgr
Schedule F	F1	F19	Operational Environmental Management	31	Jan	2018	GWA Dev Compliance Mgr
Schedule G	G1	G12	Additional Procedures	31	Jan	2018	GWA Dev Compliance Mgr
Appendix 1	1	2	Project Layout Schedule of Land	31	Jan	2018	GWA Dev Compliance Mgr
Appendix 2	(a)	(f)	Background Noise Survey Verification Report	31	Jan	2018	GWA Dev Compliance Mgr
Appendix 3	Part A	Part B	Noise Compliance Assessment - Tonality	31	Jan	2018	GWA Dev Compliance Mgr
			Noise Compliance Assessment – Low Frequency Noise	31	Jan	2018	GWA Dev Compliance Mgr
			Noise Compliance Assessment	31	Jan	2018	GWA Dev Compliance Mgr

SCHEDULE A

Land	Overview of Project Status for Stage 1
<p>The Land Shown in Appendix 1 of the Project Approval and modified on 01 April 2016 (MOD 3) access, 31 May 2017 (MOD 4) lands for alternative grid connection, 11 Oct 2017 (MOD 5) Subdivision for two substation sites.</p>	<p>Consistent. Properties as shown in EA (Private lands and Crown land) MOD 3 Approval includes additional easement for access from Ilparran Road MOD 4 Approval for alternative grid connection (Stage 2) MOD 5 - Subdivision</p>
<p>Project – White Rock Wind Farm Project</p>	
<p>1. Construction and operation of a wind farm with up to 119 turbines and associated infrastructure</p>	<p>Stage 1 - 70 turbines – Subset of the 119 approved sites. All installed. Project components generally in accordance with EA, 2011 and Modification Applications.</p>
<ul style="list-style-type: none"> • access tracks, 	<p>Access tracks generally as per EA (shown on plan in OEMP Annex C.1). Mod 3 Approval allows modified Stage 1 access track layout.</p>
<ul style="list-style-type: none"> • local road infrastructure upgrades, 	<p>As agreed with RMS and Councils (Details in CTAMP) Complete</p>
<ul style="list-style-type: none"> • electrical connections between the turbines (both underground cable and aboveground power lines), 	<p>33kV underground cables and 33kV overhead line (Shown in OEMP). Mod 3 Application shows Stage 1 electrical connections layout. (cabling complete)</p>
<ul style="list-style-type: none"> • temporary concrete batching plant, (Extn. of Northern approved by MCR) 	<p>Temporary concrete batch plants (3 locations in CCAFMP – comply with E18) All Batch Plants now decommissioned and rehabilitation of sites well advanced.</p>
<ul style="list-style-type: none"> • on-site control buildings 	<p>O&M building at northern site entrance and additional facility at southern entry addressed by Mod 3 application. O&M Buildings installed.</p>
<ul style="list-style-type: none"> • and equipment storage facilities; 	<p>O&M building at northern site entrance and additional facility at southern entry addressed by Mod 3 Application. Storage areas associated with O&M Buildings</p>
<p>2. an on-site substation and transmission connection from the substation to the TransGrid 132 kV transmission line to the north of the site; and</p>	<p>33kV/132kV substation installed, Mod 3 approved minor modification of 8km 132kV transmission line route. 132kV line installed. Substation energized and operating.</p>
<p>3. permanent monitoring masts.</p>	<p>Permanent monitoring masts (MM_2025 near T20 & 25 and MM_5960 near T59 & T60) (All temporary met masts at Sites T20, T25, T59 and T60 now removed)</p>

SCHEDULE B - ADMINISTRATIVE CONDITIONS

Ref	part	Details of Condition	Stage	Compliance Status	Status for demonstrating compliance	By whom
		TERMS OF APPROVAL				
B1		The Proponent shall carry out the project:	All	NA	See below	WRWFPL
	(a)	generally in accordance with the EA ('EA' as per Definitions)	All	Complies	Noted.	WRWFPL
	(d)	In accordance with conditions of this approval	All	Ongoing	This Matrix records status of compliance	WRWFPL
		Note: The general layout is depicted in the figure in Appendix 1 of the Project Approval	All	Complies	The layout shown in OEMP, Annex C.1 is consistent with general layout in Appendix 1 of Project Approval. (MCRs prepared for minor variations and approval of ER gained	WRWFPL
B2		If there is any inconsistency between the documents referred to in Condition B1, the most recent document shall prevail to the extent of any inconsistency. However, the conditions of this approval shall prevail to the extent of the inconsistency.	All	Clarification only	Noted	WRWFPL
B3		The Proponent shall comply with any reasonable requirement(s) of the Secretary arising from the Department's assessment of:	All	As below	See below	WRWFPL
	(a)	Any strategies, plans, programs, reviews, audit correspondence that are submitted in accordance with the requirements of this approval;	All	Complies	All requirements addressed	WRWFPL
	(b)	any report, reviews or audits commissioned by the Department regarding compliance with this approval; and	All	Complies	WRWFPL has responded to DPE requests for review as required	WRWFPL
	(c)	the implementation of any actions or measures contained in these documents	All	Complies	WRWFPL has implemented the necessary management measures for the project	WRWFPL
B4		Subject to confidentiality, the Proponent shall make all documents required under this approval available for public inspection on request.	All	Ongoing	Noted – Project Approval, EPL 20665 and approved management plans have now been posted to WRWF website.	WRWFPL
		LIMITS OF APPROVAL				

Ref	part	Details of Condition	Stage	Compliance Status	Status for demonstrating compliance	By whom
B5		This Approval lapses 5 years after the date of this Approval unless the Proponent has confirmed to the satisfaction of the Secretary that orders have been placed for wind turbines, or demonstrated that work subject of this Approval has been completed on the Site before the date on which the Approval would otherwise lapse under this condition. Work, for the purpose of this condition includes at least one of the following:	Stage 1	Complies	Commencement of construction occurred on 25 May 2016. All permanent facilities have been installed	WRWF PL
	(a)	internal track construction;	Construct	Complies	All tracks formed,	WRWFPL
	(b)	civil works associated with the construction of the foundations for the wind turbine footings;	Construct	Complies	All turbine footings completed	WRWFPL
	(c)	control room construction;	Construct	Complies	Installed	WRWFPL
	(d)	electrical substation construction;	Construct	Complies	Completed and energised	WRWFPL
	(e)	underground cabling;	Construct	Complies	Complete	WRWFPL
	(f)	internal overhead transmission line construction	Construct	Complies	Complete	WRWFPL
B6		The project shall not exceed 119 wind turbines.	All stages	Complies	Stage 1 – 70 Turbines installed.	WRWFPL
B7		If any wind turbine is not used for the generation of electricity for a continuous period of 12 months, it shall be decommissioned by the Proponent, unless otherwise agreed by the Secretary . The Proponent shall keep independently-verified annual records of the use of wind turbines for electricity generation. Copies of these records shall be provided to the Secretary upon request. The relevant wind turbine and any associated infrastructure is to be dismantled and removed from the site by the Proponent within 18 months of the date that the wind turbine was last used to generate electricity.	Operations	Not Triggered yet	Wind Farm will commence operation in February 2018 or soon thereafter. The WRWF SCADA systems maintains records of all turbine operations and is auditable.	WRWFPL
B8		Prior to the commencement of construction, the Proponent shall provide written evidence to the satisfaction of the Secretary that the lease agreements with the site landowners have adequate provisions	Pre-construct	Complete	WRWF compiled relevant information for DPE. On 20/8/2015, DPE approved provisions for decommissioning in WRWFPL lease agreements.	Complete

Ref	part	Details of Condition	Stage	Compliance Status	Status for demonstrating compliance	By whom
		to require that decommissioning occurs in accordance with this approval, and is the responsibility of the Proponent.				
		STATUTORY REQUIREMENTS				
B9		The Proponent shall ensure that all licences, permits and approvals are obtained and maintained as required throughout the life of the project. No condition of this approval removes the obligation of the Proponent to obtain, renew or comply with such licences, permits or approvals. The Proponent shall ensure that a copy of this approval and all relevant environmental approvals are available on the site at all times during the project.	All Stages	Complies	All relevant Permits, Licences and approvals for current phase of WRWF Stage 1 project have been obtained. Copies of these items are available at the site.	WRWFPL
B10		For the purpose of section 75S(2)(b) of the EP&A Act, the <i>relevant provisions</i> , as defined in section 75S(1A) of the EP&A Act, apply to this approval. This includes for buildings and structures including roads.	Construct	Ongoing requirements	WRWF requires construction certificates, occupation certificates and subdivision certificates, where applicable for the various project components. Group DLA has been appointed as Principal Certifier. All required Construction Certificates have been obtained.	WRWFPL Ongoing
		STAGING				
B11		The Proponent may construct, operate and decommission the project in stages.	Each Stage	Complies	Staging Report submitted DPE 20/10/2015. Described staging and applicability of conditions. Updated/sent to DPE 28/4/16. Revised version sent to DPE 06/11/2017.	Complete Stage 1
B11		Where staging of the project is proposed, the conditions of this approval are only required to be complied with at the relevant time and to the extent that they are relevant to the specific stage(s).	Applicable stage	Complies	Noted and addressed for Stage 1 Further requirements prior to Stage 2	WRWFPL
B12		Deleted				
		COMPLIANCE				
B13		Deleted		NA		

Ref	part	Details of Condition	Stage	Compliance Status	Status for demonstrating compliance	By whom
B14		Deleted		NA		
B15		In the event of a dispute between the Proponent and a public authority, in relation to an applicable requirement in this approval or relevant matter relating to the project, either party may refer the matter to the Secretary for resolution. The Secretary's determination of any such dispute shall be final and binding on the parties.	All Stages	Not triggered yet	Noted	WRWF PL
		NOTIFICATION OF DEPARTMENT				
B16		<p>Prior to the commencement of the construction, operation and/or decommissioning of the project, the Proponent shall notify the Department in writing of the date of commencement of the relevant stage. If the construction, operation and/or decommissioning of the project is to be staged, then the Proponent must:</p> <p>(a) notify the Department in writing prior to the commencement of the relevant stage, and clearly identify the development that would be carried out during the relevant stage; and</p> <p>(b) inform the local community and the Community Consultation Committee about the proposed staging plans.</p>	<p>Stage 1 Constr.</p>	Complies	Notification for Stage 1 commencement of construction provided to DPE in April 2016.	WRWF PL
			<p>Stage 1 Operat- ions</p>		Notification for Stage 1 commencement of Operations (31 Jan 2018)	
		UPDATING AND STAGING OF STRATEGIES, PLANS OR PROGRAMS				
B17		<p>With the approval of the Secretary, the Proponent may submit any strategy, plan or program required by this approval on a progressive basis.</p> <p>To ensure the strategies, plans or programs under the conditions of this approval are updated on a regular basis, the Proponent may at any time submit revised strategies, plans or programs to the Secretary for approval.</p> <p>With the agreement of the Secretary, the Proponent may prepare any revised strategy, plan or program without undertaking consultation with all the parties referred to under the relevant condition of this approval.</p>	Stage 1	Complies	A revised Staging Report (Nov 2017) has been prepared and submitted to DPE on 6 Nov 2017, although no longer required by the Conditions of Approval.	WRWF PL

Ref	part	Details of Condition	Stage	Compliance Status	Status for demonstrating compliance	By whom
		<p><i>Notes:</i></p> <ul style="list-style-type: none"> • While any strategy, plan or program may be submitted on a progressive basis, the Proponent must ensure that all development being carried out on site is covered by suitable strategies, plans or programs at all times. • If the submission of any strategy, plan or program is to be staged, then the relevant strategy, plan or program must clearly describe the specific stage to which the strategy, plan or program applies, the relationship of this stage to any future stages, and the trigger for updating the strategy, plan or program. 				
		SUBDIVISION				
B18		<p>The Applicant may subdivide Lot 1 DP 624913 and Lot 153 DP 753260 to create two new allotments, in accordance with MOD 5 and the requirements of the EP&A Act and EP&A Regulation.</p> <p><i>Notes:</i></p> <ul style="list-style-type: none"> • Under Part 4A of the EP&A Act, the Applicant is required to obtain a subdivision certificate for a plan of subdivision. • Part 8 of the EP&A Regulation sets out the application requirements for subdivision certificates. 	1 and 2	Complies	<p>Subdivision required initially for Lot 153 DP753260 (existing WRWF substation)</p> <p>Subdivision for Lot 1 DP 624913 required later for Stage 2 for the 132 kV / 330 kV Substation, if proceeding.</p>	WRWF PL

SCHEDULE C - ENVIRONMENTAL PERFORMANCE

No	Sub	Details of Condition	Timing	Complies	Status	Responsibility
C1		BIODIVERSITY - Clearing The proponent shall:	All Stages			WRWFPL
C1	(a)	minimize the clearing of native vegetation on the site; and	Pre-construct	Complies Ongoing	Pre-clearing assessment by RPS. CFFMP part of approved Stage 1 CEMP. WRWFPL established a review process to progressively monitor compliance for vegetation impact.	WRWFPL EPC Ongoing
C1	(b)	Not clear more than 28 hectares of the Ribbon Gum – Mountain Gum – Snow Gum Grassy Forest/Woodland of the New England Tableland Bioregion EEC on site.	Stage 1 Construct	Complies	MOD 4 Approval increased the clearance limit from 22 to 28 ha. Stage 1 works completed within the specified limit.	WRWFPL
C2		Tree trunks and major branches from cleared trees should be used, to the fullest extent practicable, to enhance habitat (coarse woody debris) in rehabilitated areas or in derived native grassland (either in offset areas or areas adjoining impacted areas) and included in the Construction Flora and Fauna Management Plan contained in condition E22.	Stage 1	Partial compliance Ongoing requirement	C2 addressed by CFFMP, sub-plan for approved Stage 1 CEMP. DP&E sought review of feasibility to mulch branches and to use mulch on site. Response sent to DP&E on 10/2/2017. Mulching commenced for 132kV line clearing. BoP contractor directed to undertake reduction of wood piles by mulching or other on-site use. Works still to occur. WRWFPL has identified other beneficial uses for the material produced and is initiating further reduction of wood piles.	WRWFPL EPC
		Biodiversity - Detailed Design & Micro-Siting				
C3		All reasonable and feasible effort shall be made to locate wind turbines at least 30 metres from adjacent hollow-bearing trees which have the	Pre-construct	Complies	HBTs and Habitat trees mapped and shown in CFFMP. Not all are able to be avoided due to the constraints of the terrain and property. BoP Contractor	WRWFPL EPC

No	Sub	Details of Condition	Timing	Complies	Status	Responsibility
		potential to provide roost or nesting habitat for bird and bat species identified to be at risk of rotor collision during turbine operation.	and Construct		also obtained pre-construction mapping of HBTs by Geolink. Zinfra is identifying clearance zones prior to line works and minimizing impacts. Underground cabling is located to minimize impacts.	
C4	I I V	Where micro-siting is proposed, the Proponent shall identify the proposed turbine locations in the CEMP, and Demonstrate how those locations will not give rise to increased impacts in respect of the following issues when compared with approved locations:	Pre-construct	Complies	Micro-siting Report describes impact of changes and that the micro-siting has not increased impacts, where necessary the assessment has used specialist inputs. Appendix I of approved Stage 1 CEMP provides details of the assessments. T25 moved further 3 metres due to ground conditions.	WRWFPL
C4		Increased landscape and visual amenity impacts	Pre-construct	Complies	Assessment by Green Bean Design found no increase due to micro-siting.	WRWFPL/ GBD
C4		Increased vegetation impacts	Pre-construct	Complies	Assessment by RPS – Reduction in impact following micro-siting.	WRWFPL/ RPS
C4		Increased cultural heritage impacts	Pre-construct	Complies	Assessed micro-siting relevant to known heritage sites. No increase.	WRWFPL/ ERM
C4		Increased shadow flicker impacts	Pre-construct	Complies	Entura ran shadow flicker model to assess change – No increase.	WRWFPL/ Entura
C4		Increased noise impacts	Pre-construct	Complies	Sonus assessed change. No increased impact following micro-siting	WRWFPL/ Sonus

No	Sub	Details of Condition	Timing	Complies	Status	Responsibility
C4		Increased bush fire impacts	Pre-construct	Complies	No increased impact from micro-siting as same buffers involved.	WRWFPL/ RFS
C4		Increased aviation impacts	Pre-construct	Complies	Review of risks and significance of changed locations. – No increase relative to previous assessment. Notify air safety authorities and aviation stakeholders of micro-siting	WRWFPL/ AP
C5		All reasonable and feasible effort shall be made to avoid native vegetation disturbance (including clearing of hollow bearing trees) during micro-siting and construction of the project so as to reduce as far as possible the extent of vegetation disturbance required for the project.	Stage 1	Complies	CFFMP addresses mitigation measures. CFFMP is part of approved Stage 1 CEMP. BOP has engaged Geolink for ecological mapping and advice. Zinfra has established processes for line to contain impacts.	WRWFPL/ EPC
		Bird and Bat Monitoring and Management				
C6		Prior to the commencement of construction, the Proponent shall prepare and submit for the approval of the Secretary a Bird and Bat Adaptive Management Program , which takes into account bird/ bat monitoring methods identified in the current editions of <i>AusWEA Best Practice Guidelines for the Implementation of Wind Energy Projects in Australia</i> and <i>Wind Farm and Birds: Interim Standards for Risk Assessment</i> . The Program shall be prepared and implemented by a suitably qualified expert, approved by the Secretary. The Program shall incorporate Monitoring, and a Decision Matrix that clearly sets out how the Proponent will respond to the outcomes of monitoring. It shall:	Stage 1	Complies BBAMP approved	Prepared by Brett Lane and Associates as approved expert. Submitted to DPE in January 2016. for review and approval. Further Baseline Bird surveys conducted Spring, Nov 2016 and, Autumn Feb/ Mar 2017. OEH endorsed the BBAMP on 21 June 2017 and subsequently DPE approved the BBAMP on 10 July 2017. Monitoring commenced from Nov 2017	WRWFPL
	(a)	incorporate an ongoing role for the suitably qualified expert;	Stage 1	Complies	(as per BBAMP) Expert (Brett Lane) approved by DPE on 22 July 2015.	WRWFPL

No	Sub	Details of Condition	Timing	Complies	Status	Responsibility
	(b)	set out monitoring requirements in order to assess the impact of the project on bird and bat populations, including details on survey locations, parameters to be measured, frequency of surveys and analyses and reporting. The monitoring program shall be capable of detecting any changes to the population of birds and/ or bats that can reasonably be attributed to the operation of the project, that is, data may be required to be collected prior to the commencement of construction;	Stage 1	Complies	(as per BBAMP) Intensive pre-construction Bat monitoring undertaken and reported in conjunction with updated BBAMP. Further Baseline Bird surveys, Spring Nov 2016 and Autumn Feb/Mar 2017 in southern part of WRWF project area including 2 echolocation monitoring sites (2017).	WRWFPL
	(c)	incorporate a decision making framework that sets out specific actions and when they may be required to be implemented to reduce any impacts on bird and bat populations that have been identified as a result of the monitoring;	Stage 1	Complies	(as per BBAMP)	WRWFPL
	(d)	identify 'at risk' bird and bat groups, seasons (such as wet seasons where bird species may be attracted to nearby wetlands) and/or areas within the project site which may attract high levels of mortality and include monthly mortality assessments and periodic local population census' and bird utilisation surveys;	Stage 1	Complies	(as per BBAMP) Reviewed and updated after pre-construction Bat monitoring and Spring 2016/Autumn 2017 BUS surveys.	WRWFPL
	(e)	identify potential mitigation measures and implementation strategies in order to reduce impacts on birds and bats such as minimising the availability of raptor perches, swift carcass removal, pest control including rabbits, use of deterrents, and sector management including switching off turbines that are predicted to or have had an unacceptable impact on bird/bat mortality at certain times; and	Stage 1	Complies	(as per BBAMP)	WRWFPL
	(f)	identify matters to be addressed in periodic reports in relation to the outcomes of monitoring, the application of the decision making framework, the mitigation measures identified, progress with the implementation of such measures, and their success.	Stage 1	Complies	(as per BBAMP)	WRWFPL
		The Reports referred to under part (f) shall be submitted to the Secretary and OEH on an annual basis for the first five years of operation and every two years thereafter (unless otherwise agreed to	Operations	Not triggered yet	Future requirement once monitoring commences after commencement of wind farm operations	WRWFPL

No	Sub	Details of Condition	Timing	Complies	Status	Responsibility
		<p>by the Secretary), and shall be prepared within two months of the end of the reporting period. The Secretary may, at the request of the Proponent at anytime, vary the reporting requirement or period by notice in writing to the Proponent.</p> <p>The Proponent is required to implement reasonable and feasible mitigation measures as identified under part (e) where the need for further action is identified through the Bird and Bat Adaptive Management Program, or as otherwise agreed with the Secretary.</p>				
		<p>Biodiversity Offset Package</p>				
C7		<p>Following final design and prior to the commencement of construction, or as otherwise agreed to by the Secretary, the Proponent shall develop and submit a Biodiversity Offset Package for the approval of the Secretary. The package shall detail how the ecological values lost as a result of the Project will be offset. The Biodiversity Offset Package shall be developed in consultation with the OEH and shall (unless otherwise agreed by the Secretary) include, but not necessarily be limited to:</p>	Stage 1	Complies With OEH since Dec 2016, waiting on approval.	Biodiversity Offset Package (BOP) submitted to OEH, 30/3/2016. DPE approved extension to 01 October 2016 to obtain approval. BOP submitted to OEH on 18 July 2016, DPE accepted on 19/8/2016 but required credits confirmed by end December 2016. ELA assessment submitted by end of December 2016. Still under review by DPE/OEH. Additional credits required for MOD 4. Further adjustment anticipated for Stage 2 in future MOD 6 application.	WRWFPL Ongoing
	(a)	<p>the identification of the extent and types of habitat that would be lost or degraded as a result of the final design of the project;</p>	Stage 1	Complies	<p>RPS has mapped impacts reported assessment of impacts – CFFMP</p> <p>AEP has advised credit requirements</p> <p>ELA has updated BOP to assess additional offset option and confirmed credit matching with proposed offset area. Also assessed MOD 4 credits.</p>	WRWFPL

No	Sub	Details of Condition	Timing	Complies	Status	Responsibility
	(b)	the objectives and biodiversity outcomes to be achieved (including 'improve or maintain' biodiversity values), and the adequacy of the proposed offset considered;	Stage 1	Complies	Addressed in BOP development.	WRWFPL
	(c)	<p>the final suite of the biodiversity offset measures selected and secured including but not necessarily limited to;</p> <p>(i) an offset proposal which is supported by a suitable metric method (such as the Biobanking Assessment Methodology);</p> <p>(ii) details of the relative condition and values of communities on the offset site in comparison to those to be impacted, including all areas of derived native grassland in moderate to good condition;</p> <p>(iii) proposed management actions and expected gains;</p>	Stage 1	Complies	<p>Proposed offset areas have been mapped and assessed and available credits calculated.</p> <p>BOP sets out overview of process to establish bio-banking sites.</p> <p>DPE letter of 19/8/16 advises satisfaction with BOP and requires credits confirmed by end December 2016. ELA prepared and submitted management plan to DPE end Dec 16.</p>	WRWFPL
	(d)	<p>the monitoring requirements for compensatory habitat works and other biodiversity offset measures proposed to ensure the outcomes of the package are achieved, including:</p> <p>(i) the monitoring of the condition of species and ecological communities at offset locations;</p> <p>(ii) the methodology for the monitoring program(s), including the number and location of offset monitoring sites, and the sampling frequency at these sites;</p> <p>(iii) provisions for the annual reporting of the monitoring results for a set period of time as determined in consultation with the OEH; and</p>	Stage 1	Complies	<p>Outline of approach to monitoring (as per Bio-banking agreement) in BOP.</p> <p>ELA prepared the Biobanking Agreement for the proposed offset site, which was submitted to DP&E, by end of December 2016, for approval. OEH is reviewing the received documents.</p>	WRWFPL
	(e)	timing and responsibilities for the implementation of the provisions of the Package.	Stage 1	Complies	ELA prepared the Biobanking Agreement and it was submitted to the DPE/OEH by end Dec 2016.	WRWFPL

No	Sub	Details of Condition	Timing	Complies	Status	Responsibility
		<p>Land offsets shall be consistent with the <i>Principles for the use of biodiversity Offsets in NSW</i> (NSW Office of Environment and Heritage, June 2011). Any land offset shall be enduring and be secured by a conservation mechanism which protects and manages the land in perpetuity. Where land offsets cannot solely achieve compensation for the loss of habitat, additional measures shall be provided to collectively deliver an improved or maintained biodiversity outcome for the region.</p> <p>Where monitoring referred to in condition (d) indicates that biodiversity outcomes are not being achieved, remedial actions shall be undertaken to ensure that the objectives of the Biodiversity Offset Package are achieved.</p>	Construct	Complies BOP with OEH pending approval	BOP based on Bio-banking System methodology initially submitted to OEH 30/3/16 for review and agreement that it is suitable. OEH advised that they were generally satisfied with it but sought minor clarifications from AEP. WRWFPL submitted an updated/alternative BOP prepared by ELA on 18 July 2016. DPE accepted it on 18 September 2016. ELA with OEH carried out biobanking surveys of the proposed offset site and confirmed it meets the credit requirements for Stage 1. The Biobanking Agreement document was submitted prior to end Dec 2016. Under review by OEH.	WRWFPL
		SOIL, WATER QUALITY AND HYDROLOGY				
C8		<p>Except as may be provided by an EPL, the project shall be constructed and operated to comply with section 120 of the <i>Protection of the Environment Operations Act 1997</i>, which prohibits the pollution of waters.</p>	Stage 1	Complies Ongoing	<p>Approved Stage 1 CEMP includes CSWQMP. EPL 20665 also addresses this aspect. PESCPs prepared and controls installed. Regular ERSED reviews undertaken.</p> <p>DPE/EPA visits 12/1/2017, 7/3/2017, 20/6/2017 and 20/11/2017. WRWFPL has responded to DPE requirements arising from these visits.</p>	WRWFPL
		Waterways				
C9		<p>Waterway crossings shall be designed and constructed in consultation with CL&W and DPI (Fisheries) and consistent with DPI</p>	Stage 1	Complies	Approved Stage 1 CEMP includes CSWQMP sub-plan	WRWFPL

No	Sub	Details of Condition	Timing	Complies	Status	Responsibility
		(Fisheries) guidelines, <i>Policy and Guidelines for Fish Friendly Waterway Crossings</i> (2004) and <i>Why Do Fish Need to Cross the Road, Fish Passage Requirements for Waterway Crossings</i> (2004).			Consultation undertaken with DPI Water. No watercourse crossings that require Fisheries consultation.	
		HAZARDS AND RISK				
C10		Dangerous goods, as defined by the Australian Dangerous Goods Code, shall be stored and handled strictly in accordance with:	Stage 1	Complies	ERM addressed in CEMP/OEMP All storages reviewed post DPE/EPA 1 st visit and corrective actions taken.	WRWFPL/ EPC/ TransGrid
	(a)	all relevant Australian Standards	Stage 1	Complies	ERM addressed in CEMP/OEMP	WRWFPL
	(b)	for liquids, a minimum bund volume requirement of 110% of the volume of the largest single stored volume within the bund; and	Stage 1	Complies	ERM addressed in CEMP and OEMP	WRWFPL
	(c)	the <i>Environment Protection Manual for Authorised Officers: Bunding and Spill Management</i> , technical bulletin (Environment Protection Authority, 1997). (Reference superseded)	Stage 1	Complies	ERM addressed in CEMP and OEMP	WRWFPL
		In the event of an inconsistency between the requirements listed in (a) to (c) above, the most stringent requirement shall prevail to the extent of the inconsistency.	Stage 1	Complies	ERM addressed in CEMP and OEMP	WRWFPL
		Aviation Obstacles and Hazards				
C11		Prior to the commencement of construction, the Proponent shall consult with:	Stage 1	Complies	ASA and CASA consulted Details of micro-siting provided.	WRWFPL
	(a)	aerodrome operators that have an aerodrome located within 30 kilometres of the boundaries of the site, to determine any impact on Obstacle Limitation Surfaces at such aerodromes;	Pre-construct	Complies	Aviation Projects (AP) undertook consultation. Documented in AP Report.	WRWFPL

No	Sub	Details of Condition	Timing	Complies	Status	Responsibility
	(b)	AirServices Australia, to determine potential impacts on instrument approach procedures at aerodromes, navigational aids, communications and surveillance facilities; and	Pre-construct	Complies	ASA contacted and has advised that WRWF does not impact aviation safety systems or approaches to local aerodromes. Updated for micro-siting.	WRWFPL
	(c)	Aerial Agriculture Association Australia, to determine potential hazards to aerial application and related operations.	Pre-construct / Operations	Complies	AAAA notified of the WRWF proposal. Address impacts pre-commissioning and once operational	WRWFPL
		Mitigation measures for each of the potential impacts and hazards identified in condition C11 (a) to (c) above, shall be determined in consultation with the respective groups identified in this condition, prior to the commencement of construction.	Stage 1 Pre-construct	Complies	Mitigation measures incorporated in CEMP by ERM. (Section 6.11) Marking of monitoring towers recommended due to lower visibility. Also marked two longer spans of 132kV line and 33kV line.	WRWFPL
C12		Prior to the commencement of construction and operation , the Proponent shall provide the following information to the Civil Aviation Safety Authority, Airservices Australia, Royal Australian Air Force - Aeronautical Information Services, as well as all known users of privately owned local airfields:	Stage 1 Pre-constructio n & pre-operations	Complies	Notified coordinates and heights at 28 April 2016 (one month before construction) and, 02/12/2016 prior to turbine erection commencing. Met Masts marked due to lower visibility. Two long spans of 132kV line and 33kV line marked with marker balls As-built details provided to relevant stakeholders on 11 July 2017.	WRWFPL
	(a)	"as constructed" coordinates in latitude and longitude of each wind turbine generator;	Stage 1	Complies	CEMP describes requirements. DPE sought information 16 June 2016. WRWFPL supplied information and DPE letter of 15July2016 stated that DPE was satisfied with the information. As-built details provided 11/7/2017. Also in OEMP.	WRWFPL

No	Sub	Details of Condition	Timing	Complies	Status	Responsibility
	(b)	final height of each wind turbine generator in Australian Height Datum; and	Stage 1 Pre-construct & pre-ops	Complies	As above.	WRWFPL
	(c)	ground level at the base of each wind turbine generator in Australian Height Datum	Stage 1 Pre-construct & pre-ops	Complies	As above	WRWFPL
C13		Should increases to the costs of aerial agricultural spraying on any non-associated property surrounding the site be attributable to the operation of the project, the Proponent shall fully fund to the affected landowner, the reasonable cost difference between pre-construction aerial agricultural spraying and the increased cost, as agreed between the relevant parties.	Stage 1	Complies	OEMP Section 5.12 addresses this issue. Arrangement documented in host landowner agreements. Neighbouring (non-associated) properties are set back from Stage 1 infrastructure, so are unlikely to be affected for this issue.	WRWFPL/ AP
		Bushfire Risk				
C14		The Proponent shall ensure that: all project components on site are designed, constructed and operated to minimise ignition risks, provide for asset protection consistent with relevant RFS design guidelines (<i>Planning for Bushfire Protection 2006 and Standards for Asset Protection</i>), and provide for necessary emergency management including appropriate fire-fighting equipment and water supplies on site to respond to a bush fire.	Stage 1 Pre-construct and construction	complies	Bushfire Risk Management Plan in approved CEMP. BFRM Plan was reviewed by RFS and comments addressed in Plan. Emergency Drill conducted on site 6th October 2016, 16 Dec 2016 and 6 October 2017. Contract specs and Safety in Design process includes Bushfire Risks. Construction teams to ensure appropriate and adequate equipment on site. Emergency drills have included RFS involvement. Construction teams had considerable water supply capacity using mobile	WRWFPL EPC/ TransGrid Ongoing

No	Sub	Details of Condition	Timing	Complies	Status	Responsibility
					<p>water tankers but these are progressively withdrawn from the site as construction draws to an end.</p> <p>The OEMP incorporates an updated BRMP developed in consultation with RFS. Equipment to respond to fires is being arranged for the operational phase of Stage 1.</p>	
C15		<p>Throughout the operational life of the project, the Proponent shall regularly consult with the local RFS about details of the project, including the construction timetable and the final location of all infrastructure on the site. The Proponent shall comply with any reasonable request of the local RFS to reduce the risk of bushfire and to enable fast access in emergencies.</p>	Stage 1	<p>Not triggered yet</p> <p>Consultation is continuing</p>	<p>Community Engagement Plan to include provision for Site Manager to regularly consult with RFS.</p> <p>CEMP/OEMP includes consultation requirement. RFS involved in emergency drill at site. RFS consulted re controls for OEMP and BRMP updated and included as appendix to OEMP.</p>	<p>WRWFPL</p> <p>EPC/</p> <p>TransGrid</p> <p>Ongoing</p>
		Telecommunications				
C16		<p>If the project results in the disruption to radio or telecommunications services in the area, then the Proponent shall make good any disruption to these services as soon as practicable following the disruption.</p> <p>If there is a dispute about the mitigation measures to be implemented or the implementation of these mitigation measures, then either party may refer the matter to the Secretary for resolution.</p>	Stage 1	Complies	<p>The proponent has worked proactively to identify risks and to mitigate them.</p> <p>A fibre solution was identified to mitigate risk of impact for Glen Innes TV services (disruption to signals received at Carpenters Hill). The solution has been implemented and activated in March 2017. – Media Release 11/4/2017 (on website)</p>	<p>WRWFPL</p> <p>Ongoing</p>

No	Sub	Details of Condition	Timing	Complies	Status	Responsibility
			Stage 1	Complies	Pre-operational TV reception assessments for neighbouring residences to assess current service quality and potential for impact have been undertaken and where warranted, improvements have been offered to avoid the risk of interference. Modifications involving supply and fitting of VAST systems has been provided to all those that requested the service offered. Further modifications will be provided if requested once the wind farm is operational.	WRWFPL
		NOISE - Overhead Transmission Line				
C17		Any overhead transmission line associated with the project shall be designed, constructed and operated to minimise the generation of corona and aeolian noise as far as reasonable and feasible at the nearest existing non-associated residences .	Stage 1	Complies	Distance from residences of: - >0.6km to 132kV overhead line - >2km to 33kV overhead line As such, these facilities will not impact the closest residences.	WRWFPL/ TransGrid
		WASTE MANAGEMENT - Waste Generation and Management				
C18		The Proponent shall not cause, permit or allow any waste generated outside the site to be received at the site for storage, treatment, processing, reprocessing, or disposal on the site, except as expressly permitted by a licence under the <i>Protection of the Environment Operations Act 1997</i> , if such a licence is required in relation to that waste.	Stage 1	Complies	ERM included requirements in CEMP (Section 5.10 Waste Management) and in OEMP (Section 5.10 Waste Management)	WRWFPL

No	Sub	Details of Condition	Timing	Complies	Status	Responsibility
C19		The Proponent shall maximise the reuse and/or recycling of waste materials generated on site, to minimise the need for treatment or disposal of those materials outside the site.	Stage 1	Complies	ERM included requirements in CEMP and OEMP (Section 5.10). Monitor contractor procedures.	WRWFPL
C20		The Proponent shall ensure that all liquid and/or non-liquid waste generated on the site is assessed and classified in accordance with <i>Waste Classification Guidelines (DECC, 2008)</i> , or any future guideline that may supersede that document and where removed from the site is only directed to a waste management facility lawfully permitted to accept the materials.	Stage 1	Complies	ERM included requirements in CEMP and OEMP Section 5.10. Contractor has tested contaminated and potentially contaminated soil/rock and disposed of them appropriately to suitable facilities.	WRWFPL/ EPC
C21		The Proponent shall ensure that no green waste is burnt on site during the life of the project.	Stage 1	Complies	ERM addressed requirements in CEMP and OEMP. No fires on site by WRWFPL/EPC/Zinfra.	WRWFPL/ EPC
		UTILITIES AND SERVICES				
C22		Utilities, services and other infrastructure potentially affected by construction and operation shall be identified prior to construction to determine requirements for access to, diversion, protection, and/or support. Consultation with the relevant owner and/or provider of services that are likely to be affected by the project shall be undertaken to make suitable arrangements for access to, diversion, protection, and/or support of the affected infrastructure as required. The cost of any such arrangements shall be borne by the Proponent.	Stage 1 Pre-construction	Complies	The project contractors have identified locations of utilities within the respective disturbance areas as part of safety in design process utilising DBYD, landowner consultation and, where necessary, consultation with service providers. No services were disrupted. TV Service providers contacted re possible interference (See C16).	WRWFPL/ EPC/ TransGrid
		VISUAL AMENITY - Views				

No	Sub	Details of Condition	Timing	Complies	Status	Responsibility
C23		All residents, business owners or public authorities, whose dwelling, business or public area respectively, may be subject to moderate to high visual impact, as defined in the EA, shall be consulted regarding impact minimisation measures. The outcomes of this consultation process shall be used to inform the Design and Landscape Plan , required under condition C30.	Stage 1 Pre-construct	Complies	Implemented consultation program through WRWFPL/GBD. Results included in DALP (Cond C30), approved by DPE on 17 March 2016	WRWFPL/ GBD
C24		At the request of any owners of residential dwellings or businesses with views of a turbine(s) located within five kilometres of their dwellings , the Proponent shall provide and bear the full cost of reasonable landscaping treatments to visually screen these dwellings . Such a request may be made in writing by the owner of the dwelling or business within 6 months from the commencement of operation of the project , and landscaping treatments agreed between the parties shall be implemented and completed within 12 months of such an agreement. Should the parties not be able to reach agreement on the scope of landscaping treatments, then either party may refer the matter to the Secretary for resolution. The Secretary's decision on such a referral shall be final and binding on the parties	Request within 6 months of commencement of Operations Treatments implemented within 12 months	Complies	DALP (Cond C30) approved by DPE on 17 March 2016. Residence database includes residences to 5km. Some residences have signed neighbour agreements that waive landscaping requirements. All other eligible properties to be addressed within required timeframes. Notification letters sent on 8/11/2017 to potential applicants re C24 provisions and process.	WRWFPL/ GBD Future
		VISUAL AMENITY - Turbine and Associated Infrastructure External Design				
C25		Deleted	NA	NA		
C26		Deleted	NA	NA		
		VISUAL AMENITY – Shadow Flicker				
C27		Shadow flicker from the project must not exceed 30 hours/annum at any residence not associated with the project.	Stage 1	Complies	Assessment of Stage 1 layout by Entura and for changes from micro-	WRWFPL

No	Sub	Details of Condition	Timing	Complies	Status	Responsibility
					siting of turbines – Reported in association with CEMP Appendix I.	
		VISUAL APPEARANCE				
C28		<p>The Proponent must:</p> <p>(a) minimise the off-site visual impacts of the project;</p> <p>(b) ensure the wind turbines are:</p> <ul style="list-style-type: none"> • painted off white/grey, unless otherwise agreed by the Secretary; and • finished with a surface treatment that minimises the potential for glare and reflection; <p>(c) ensure the visual appearance of all ancillary infrastructure (including paint colours), blends in as far as possible with the surrounding landscape; and</p> <p>(d) not mount any advertising signs or logos on wind turbines or ancillary infrastructure.</p>	Stage 1	Complies	<p>Addressed in WRWF Stage 1 CEMP and DALP</p> <p>Stage 1 Turbines are compliant.</p> <p>Substation has low visual impact</p> <p>Ancillaries, eg O&M Buildings comply.</p> <p>No advertising, signs or logos on turbines or ancillary infrastructure</p>	<p>WRWFPL</p> <p>TransGrid</p> <p>EPC</p>
		VISUAL AMENITY – Night Lighting				
C29		With the exception of aviation hazard lighting implemented in accordance with the requirements of this condition, no external lighting other than low intensity security night lighting is permitted on site unless otherwise agreed or directed by the Secretary , or required by Civil Aviation Safety Authority.	Stage 1	Complies	<p>Addressed in CEMP and DALP. There is a need for lighting during emergency night works but these are occasional and not permanent.</p> <p>TransGrid to ensure compliance for substation.</p>	<p>WRWFPL</p> <p>EPC</p> <p>TransGrid</p>
C29		Prior to the commencement of construction , the Proponent shall consult with the Civil Aviation Safety Authority on the need for aviation hazard lighting in relation to the wind turbines. Any aviation hazard lighting shall be implemented in a manner that minimizes visual	Stage 1 Pre-construction	Complies	Complete - CASA has been consulted regarding Stage 1 and confirmed no requirement for aviation safety lighting. Turbines to be less than 150 metres high.	<p>Complete</p> <p>WRWFPL</p>

No	Sub	Details of Condition	Timing	Complies	Status	Responsibility
		intrusion to surrounding non-associated residences as far as reasonable and feasible			Also confirmed with respect to micro-siting of turbines.	
		VISUAL AMENITY – Design and Landscaping				
C30		<p>A Design and Landscaping Plan (DALP) shall be prepared to outline measures to ensure appropriate development and maintenance of landscaping on the site to achieve adequate landscape buffers and address the visual impacts arising from the project, including turbines, site access roads and associated above ground infrastructure, as far as is reasonable and feasible.</p> <p>The Plan shall be prepared by a qualified landscape architect and where relevant meet any requirements of the Councils. The Plan shall include design treatments for the turbines and ancillary infrastructure, including, but not necessarily limited to:</p>	Stage 1	Complies	<p>Green Bean Design) appointed and prepared DALP. DALP submitted to DPE and approved 17 March 2016.</p> <p>DALP considered landscape screening measures, for substation and O&M building. Not required for substation but landscape plan prepared for O&M building at northern Site Office location. O&M Landscape plan under review by DPE. Ensure all measures implemented.</p>	WRWFPL/ GBD
	(a)	the landscape screening measures at residences in close proximity to the project site and along nearby roadsides to screen potential moderate to significant views of the project, including an outline of additional measures available for requested landscaping treatments, as permitted under condition C24	Stage 1	Complies	<p>Consulted landowners and Councils. No requirement from GISC Council.</p> <p>Neighbours contacted pre-construction to discuss requirements. Described in DALP. Notification letters sent 8/11/2017.</p>	WRWFPL/ GBD
	(b)	landscape elements and built elements, including proposed treatments, finishes and materials of exposed surfaces (including colour specifications)	Stage 1	Ongoing	Addressed in DALP - Designs to address this issue. O&M building not installed yet.	WRWFPL/ GBD
	(c)	lighting	Stage 1	Ongoing	Design to address this issue	WRWFPL/ GBD
	(d)	a schedule of species to be used in landscaping	Stage 1	Complies	Landscape architect identified in DALP	WRWFPL/ GBD

No	Sub	Details of Condition	Timing	Complies	Status	Responsibility
	(e)	details of the timing and progressive implementation of landscape works	Stage 1	Complies	Timeline in DALP	WRWFPL/ GBD
	(f)	procedures and methods to monitor and maintain landscaped areas.	Stage 1	Complies	In DALP	WRWFPL/ GBD
		The Plan shall be submitted for the approval of the Secretary prior to the commencement of permanent built works and/ or landscaping , unless otherwise agreed by the Secretary . The Plan may be submitted in stages to suit the staged construction program of the project.	Stage 1	Complies	The Stage 1 DALP was submitted to DPE and was approved by DPE on 17 March 2016. Revision to update landscaping plan for O&M building. Seeking DPE approval of revision.	WRWFPL
PROPERTY IMPACTS – Crown Land						
C31		Prior to the commencement of construction of the project, the Proponent shall, with the agreement of Council, assume full maintenance responsibility for any Crown road reserves associated with the project which are identified as requiring dedication to Council during the life of the project. The Proponent shall retain full maintenance responsibility for any such road(s) for the duration of their dedication to Council during the life of the project.	Stage 1	Complies	WRWFPL has consulted with Council for any Crown lands under their jurisdiction where access agreement needed. Agreements for use as per Condition E17.	WRWFPL EPC
C32		Prior to the commencement of construction of the project , the Proponent shall consult with and comply with the requirements of the Department of Lands in relation to any Crown land affected by the project to enable the lawful use of that land by the project.	Stage 1	Complies	Crown Land requirements for access across or, use of Crown Land, were met prior to commencement of construction. Licences obtained from Crown Lands.	WRWFPL
PROPERTY IMPACTS – Trigonometric Reserves						
C33		Disturbance to Trigonometric Reserves shall be avoided during the life of the project, unless otherwise approved by the Surveyor General and the relevant licence under the <i>Crown Lands Act 1989</i> is obtained by the Proponent.	All stages	Complies	Complete - No TS to be disturbed	Complete

No	Sub	Details of Condition	Timing	Complies	Status	Responsibility
		PROPERTY IMPACTS – Mineral Resources				
C34		Prior to the commencement of relevant construction works, the Proponent shall consult with the Department of Planning and Environment – Division of Resources and Geoscience , and holders of mineral, mining and exploration titles or tenements, with respect to measures to be applied during construction and operation of the project so as to minimise the potential for any sterilisation of resources on the tenement.	Stage 1 Pre-construct	Complies	Complete Min Resources has been consulted No Mineral Titles for WRWF No impacts Update sought in 2016 – No reply.	WRWFPL

SCHEDULE D - COMMUNITY INFORMATION REPORTING AND AUDITING - COMMUNITY INFORMATION, CONSULTATION AND INVOLVEMENT

No	Sub	Detail of Condition	Timing	Complies	Status	Responsibility
		Community Consultative Committee				
D1		From the commencement of construction, the Proponent must operate a Community Consultative Committee for the project to the satisfaction of the Secretary, in accordance with the <i>Community Consultative Committee Guidelines for State Significant Projects (2016)</i> , or its latest version.	Stage 1	Complies	CCC initiated by Epuron. GWA re-established CCC process in 2015. Approval of new Chair and members from DPE. DPE approved nominated further replacement chair for CCC on 28 October 2016. Last CCC meeting November 2017, minutes on WRWF website. Next meet 8 February 2018.	WRWFPL
		Complaints and Enquiries Procedure				
D2		Prior to the commencement of construction , or as otherwise agreed by the Secretary , the Proponent shall ensure that the following are available for community enquiries and complaints for the life of the project (including construction and operation) or as otherwise agreed by the Secretary :	Stage 1	Complies	Addressed in CEMP/OEMP and through Website and Newsletters. All components established and periodic maintenance required. Monthly reviews of resolution status.	WRWFPL
	(a)	a 24 hour telephone number(s) on which complaints and enquiries about the project may be registered	Stage 1	Complies	Website has contact details	WRWFPL
	(b)	a postal address to which written complaints and enquires may be sent	Stage 1	Complies	Website has contact details	WRWFPL
	(c)	an email address to which electronic complaints and enquiries may be transmitted	Stage 1	Complies	Website has contact details	WRWFPL
	(d)	a complaints management and mediation system for complaints unable to be resolved.	Stage 1	Complies	In Complaints Management System – In CEMP/OEMP	WRWFPL

No	Sub	Detail of Condition	Timing	Complies	Status	Responsibility
		The telephone number, the postal and email addresses shall be published in newspaper(s) circulating in the local area prior to the commencement of construction and prior to the commencement of operation . This information shall also be provided on the website (or dedicated pages) required by this approval.	Stage 1 Pre-construct	Complies	Newspaper advert pre-construction week ending 29/4/2016. Possible minor delay for pre-operations but details on website, established and maintained.	WRWFPL
D3		<p>Prior to the commencement of construction, or as otherwise agreed by the Secretary, the Proponent shall prepare and implement a Complaints Management System consistent with <i>AS 4269: Complaints Handling (superseded)</i> and maintain the System for the duration of construction and for the life of the project.</p> <p>Information on all complaints received, including the means by which they were addressed and whether resolution was reached, with or without mediation, shall be maintained in a complaints register and included in the compliance reports required by this approval.</p> <p>The information contained within the System shall be made available to the Secretary on request.</p>	Stage 1 Pre-construct	Complies	<p>CMS prepared as set out in CEMP (Annex N & O) and OEMP 3.9.2.</p> <p>Established Complaints Register using 'Consultation Manager' (CM) to record complaints. CM replaced by 'Darzin'.</p> <p>Ensure close out on complaints in reasonable time after receipt.</p> <p>Recording must satisfy EPL requirements.</p>	WRWFPL
		Provision of Electronic Information				
D4		Prior to the commencement of construction , or as otherwise agreed by the Secretary, the Proponent shall establish and maintain a new website, or dedicated pages within an existing website, for the provision of electronic information associated with the project, for the life of the project. The Proponent shall, subject to confidentiality, publish and maintain up-to-date information on the website or dedicated pages including, but not necessarily limited to:	All stages	Complies	<p>WRWF web-site established.</p> <p>Website is maintained up to date.</p> <p>Items below are addressed</p>	WRWFPL
	(a)	information on the current implementation status of the project	Stage 1	Complies	Regular reviews of adequacy of material on website and updates as required	WRWFPL

No	Sub	Detail of Condition	Timing	Complies	Status	Responsibility
	(b)	a copy of the documents referred to under condition B1 of this approval, and any documentation supporting modifications to this approval that may be granted from time to time	Stage 1	Complies	Review and update as required.	WRWFPL
	(c)	a copy of this approval and any future modification to this approval	Stage 1	Complies	Complete. Updated for Modification 5.	WRWFPL
	(d)	a copy of each relevant environmental approval/consent, licence or permit required and obtained in relation to the project	Stage 1	Complies	EPL 20665 as varied on 12 Dec 2016, 28 April 2017, 11 July 2017 and 4 Sept 2017.	WRWFPL
	(e)	a copy of each current strategy, plan, program or other document required under this approval	Stage 1	Complies	Current set of documentation is maintained on the project website.	WRWFPL
	(f)	the outcomes of compliance tracking in accordance with condition D5 of this approval	Stage 1	Complies	CTP matrix (D5) on website. (Quarterly updates uses this matrix).	WRWFPL
	(g)	details of contact point(s) to which community complaints and inquiries may be directed, including a telephone number, postal and email addresses.	Stage 1	Complies	Complete – Shown on website.	WRWFPL
		Revision of Strategies, Plans and Programs				
D4A		Within 3 months of the submission of:			See below	
D4A		(a) the submission of an incident report under condition D6 below;	Stage 1	Complies	None to date. Several events considered for reporting but assessed as not triggering the requirement.	WRWFPL
D4A		(b) the submission of an audit under condition D8 below; or	Stage 1	Complies	Audit under Condition D8 not due yet	WRWFPL

No	Sub	Detail of Condition	Timing	Complies	Status	Responsibility
D4A		<p>(c) any modification to the conditions of this approval (unless the conditions require otherwise),</p> <p>the Proponent shall review and, if necessary, revise the strategies, plans, and programs required under this approval to the satisfaction of the Secretary.</p> <p>Where this review leads to revisions in any such document, then within 4 weeks of the review the revised document must be submitted to the Secretary for approval.</p> <p><i>Note: This is to ensure the strategies, plans and programs are updated on a regular basis, and incorporate any recommended measures to improve the environmental performance of the project.</i></p>	Stage 1	Complies	<p>MOD 4 approval 31/5/2017</p> <p>MOD 5 Approval 11/10/2017</p> <p>Staging Report (no longer required but has been maintained to provide context for the development.</p> <p>Other plans relating to MOD 4 and MOD 5 to be updated prior to construction of Stage 2 commencing</p>	WRWFPL
		COMPLIANCE MONITORING AND TRACKING				
D5		<p>Compliance Tracking Program (CTP)</p> <p>The Proponent shall develop and implement a Compliance Tracking Program (CTP) to track compliance with the requirements of this approval. The Program shall be submitted to the Secretary for approval prior to the commencement of construction and operate for the life of the project. The Program shall include, but not necessarily be limited to:</p>	Stage 1	Complies	<p>This spreadsheet (matrix) together with process for review and update as outlined in CTP report approved by DPE in December 2015.</p> <p>This spreadsheet updated quarterly. Previous submission to DPE for beginning of November 2017.</p>	<p>Approved</p> <p>WRWFPL</p> <p>(Ongoing maintenance of this matrix)</p>
	(a)	provisions for the notification of the Secretary prior to the commencement of construction and prior to the commencement of operation of the project (including prior to each stage, where works are being staged);	Stage 1	Complies	<p>Requirement in CTP. Included in project schedule.</p> <p>Notification for construction occurred together with PCCR. Similar notification for operations together with POCR submission, 31/01/2018.</p>	WRWFPL
	(b)	provisions for periodic review of the compliance status of the project against the requirements of this approval;	Stage 1	Complies	<p>Reviews and update of CTP Tracker spreadsheet at least quarterly. Requirement in CTP and CEMP.</p>	WRWFPL

No	Sub	Detail of Condition	Timing	Complies	Status	Responsibility
	(c)	provisions for periodic reporting of compliance status to the Secretary , including <ul style="list-style-type: none"> • a Pre-Construction Compliance Report, • reporting during construction, and • a Pre-Operation Compliance Report; 	All stages	Complies	Periodic reporting at key stages. Submitted PCCR 29 April 2016. DPE satisfied with information provided, DPE letter 15/7/16.	WRWFPL
				Complies	Quarterly updates on compliance	
				Complies	POCR at end Jan 2018 prior to commencement of operations	
	(d)	a program for independent environmental auditing in accordance with ISO 19011:2003 – Guidelines for Quality and/ or Environmental Management Systems Auditing;	Stage 1	Complies	Details in CTP and cross-referenced by CEMP and OEMP. 4 Internal audits June and Sept 2016, March and June 2017. First external audit December 2016 after 6 months of construction. Also specialist and contract reviews.	WRWFPL
	(e)	mechanisms for recording environmental incidents during construction and actions taken in response to those incidents	Stage 1	Complies	In CTP and cross-referenced by CEMP/OEMP.	WRWFPL
	(f)	provisions for reporting environmental incidents to the Secretary and relevant public authorities during construction;	Stage 1	Complies	In CTP and cross-referenced by CEMP/OEMP.	WRWFPL
	(g)	procedures for rectifying any non-compliance identified during environmental auditing, review of compliance or incident management; and	Stage 1	Complies	In CTP and cross-referenced by CEMP/OEMP.	WRWFPL
	(h)	provisions for ensuring all employees, contractors and sub-contractors are aware of, and comply with, the conditions of this approval relevant to their respective activities.	Stage 1	Complies	In CTP and cross-referenced by CEMP/OEMP. Inductions provided at commencement. Periodic reviews.	WRWFPL
		Incident Reporting				
D6		The Proponent shall notify the Secretary within 24 hours of becoming aware of any incident with actual or potential significant off-site impacts on people or the biophysical environment. Further, the	As required	Complies	Requirement in CTP and Stage 1 CEMP and OEMP.	WRWFPL

No	Sub	Detail of Condition	Timing	Complies	Status	Responsibility
		Proponent shall provide full written details of the incident to the Secretary within seven days of the date on which the incident occurred.			No reportable incidents to date.	
D7		The Proponent shall meet the requirements of the Secretary to address the cause(s) or impacts of any incident, as they relate to this approval, reported in accordance with condition D6 of this approval, within such period as the Secretary may require.	As required	Complies	Requirement in approved Stage 1 CEMP and OEMP.	WRWFPL
		OPERATIONAL PERFORMANCE – Operation Performance Audit Report				
D8		Within fifteen months of the completion of construction , and at any other time required by the Secretary , the Proponent shall commission an independent qualified person or team to undertake an Operational Performance Audit of the project. The independent person or team shall be approved by the Secretary prior to the commencement of the Audit. The Operational Performance Audit Report shall be submitted to the Secretary within one month of the completion of the Audit, unless otherwise agreed by the Secretary. The Audit shall:	Operations	Not Triggered Yet	Future requirement by May 2019.	Future WRWFPL
	(a)	Assess compliance with the requirements of this approval, and other licences and approvals that apply to the project;	Operations	Not Triggered Yet	Future requirement	Future WRWFPL
	(b)	assess the operational performance of the project against the aims and objectives for the project specified in the documents referred to under condition B1 of this approval;	Operations	Not Triggered Yet	Future requirement	Future WRWFPL
	(c)	assess the environmental performance of the project against the predictions made and conclusions drawn in the documents referred to under condition B1 of this approval; and	Operations	Not Triggered Yet	Future requirement	Future WRWFPL
	(d)	review the effectiveness of the environmental management of the project, including any environmental impact mitigation works.	Operations	Not Triggered Yet	Future requirement	Future WRWFPL

SCHEDULE E - CONSTRUCTION ENVIRONMENTAL MANAGEMENT

No	Sub	Detail of Condition	Timing	Complies	Status	Responsibility
E1		AIR QUALITY - Dust Generation - The Proponent shall construct and operate the project in a manner that minimises dust generation from the site, including wind-blown and traffic-generated dust as far as practicable. All project related activities on the site shall be undertaken with the objective of preventing visible emissions of dust from the site. Should visible dust emissions attributable to the project occur during construction and operation, the Proponent shall identify and implement all practicable dust mitigation measures, including cessation of relevant works, as appropriate, such that emissions of visible dust cease.	Stage 1	Complies	In approved CEMP – AQ and Dust management (Section 6.8) After site visit on 12/1/2017, DPE/EPA sought a report reviewing the adequacy of dust controls. Maximum risk of dust events in dry conditions with high traffic volumes. Risk decreased as construction activities scaled back and for Operations Phase (OEMP Section 5.8).	WRWFPL EPC TransGrid
		HERITAGE				
E2		In undertaking the project, impacts to heritage, shall to the greatest extent practicable, be avoided and minimised. Where impacts are unavoidable, works shall be undertaken in accordance with the strategy outlined in the Construction Heritage Management Plan required by condition E22.	Stage 1	Complies	Design compliance check. Approved CEMP – CHMP Sub-Plan Stakeholder and OEH consultation Induction scope covers heritage Addressed in OEMP Section 5.2.	WRWFPL
E3		If during the course of construction the Proponent becomes aware of any previously unidentified heritage object(s), all work likely to affect the object(s) shall cease immediately and the Heritage Council of New South Wales shall be notified immediately in accordance with section 146 of the NSW Heritage Act 1977. Relevant works shall not recommence until written authorisation from the Secretary of OEH advising otherwise is received by the Proponent.	Stage 1	Complies	In CHMP, in approved CEMP In OEMP Section 5.2 No new heritage items identified during construction.	WRWFPL

No	Sub	Detail of Condition	Timing	Compl es	Status	Responsibili ty
E4		If during the course of construction the Proponent becomes aware of any previously unidentified Aboriginal object(s), all work likely to affect the object(s) shall cease immediately and the OEH informed in accordance with section 89A of the National Parks and Wildlife Act 1974. Relevant works shall not recommence until written authorisation from the Secretary of OEH advising otherwise is received by the Proponent.	Stage 1	Compl es	In CHMP in approved CEMP Induction to raise awareness of nature potential Aboriginal objects, artefacts and scarred trees. Clearance for registered sites No new items identified during construction.	WRWFPL/ EPC/ TransGrid
		NOISE AND VIBRATION Construction or Decommissioning Hours				
E5		The Proponent shall only undertake construction or decommissioning between:	Stage 1	Complie s	Approved CEMP – CNVMP and EPL 20665	WRWFPL
	(a)	7:00am to 6:00pm Mondays to Fridays;	Stage 1	Complie s with some OOHW	Monitor compliance	WRWFPL
	(b)	8:00am to 1:00pm Saturdays; and			Monitor compliance	WRWFPL
	(c)	at no time on Sundays or public holidays.			Monitor compliance	WRWFPL
E5		The following construction activities may be undertaken outside these hours	Stage 1	Complie s	OOHW Protocol in Construction Noise and Vibration Sub-Plan E22b (vi)	WRWFPL
		Activities that are inaudible at any non-associated residence;	Stage 1	Complie s	No restriction on these activities. Confirm as inaudible.	WRWFPL
		Activities approved under an out-of-hours (OOHW) work protocol (see condition E22(b)(vi))	Stage 1	Complie s	OOHW Protocol is part of CNVMP. Some specific OOHW approvals by ER as per process in CNVMP.	WRWFPL
		for the delivery of materials as requested by the NSW Police Force or other authorities for safety reasons; or,	Stage 1	Not Trigger ed	If required	WRWFPL
E5		emergency work to avoid the loss of lives, property and/or prevent environmental harm;	Stage 1	As above	If required	WRWFPL

No	Sub	Detail of Condition				Timing	Complies	Status	Responsibility
E6-E8		Deleted				NA	NA	NA	NA
E9		The Proponent shall only carry out blasting on site between 9am and 5pm Monday to Friday and 9am to 1pm Saturday. No blasting is allowed on Sundays or NSW public holidays				Stage 1	Complies	Noted – In CNVMP and EPL 20665 EPL 20665 limits number of blasting events to two per day. Limited blasting undertaken to date.	WRWFPL
E10	(a)	The Proponent shall ensure that any blasting carried out during construction of the project does not exceed the criteria in Table 1.				Stage 1	Complies	As above	WRWFPL
		Table 1 – Blasting criteria							WRWFPL
		Location	Airblast overpressure (dB(Lin Peak))	Ground pressure (mm/s)	Allowable exceedance				WRWFPL
		Residence on privately owned land	120	10	0%	Stage 1	Complies	Monitoring was undertaken where blasting utilized. Notifications as applicable. Results show compliance at all residences on privately owned land. Residences are beyond threshold for measurement (Discussed with EPA and EPL 20665 amended accordingly on 12 Dec 2016).	WRWFPL
			115	5	5% of total number of blasts or events over 12 months				
E11		Deleted					NA		NA
E12		Deleted					NA		NA
		PROPERTY IMPACTS							

No	Sub	Detail of Condition	Timing	Complies	Status	Responsibility
E13		Access to property shall be maintained during construction unless otherwise agreed in advance with the affected property owner. Access that is physically affected by the project shall be reinstated by the Proponent to at least an equivalent standard, in consultation with the affected property owner.	Stage 1	Ongoing	Landowner agreements. Regular liaison between Landowners and WRWFPL Project and Site Representatives. Access maintained	WRWFPL
E14		Any damage caused to property as a result of the project shall be rectified or the property owner compensated, within a reasonable timeframe, with the costs borne by the Proponent.	Stage 1	Complies	Consultation with Landowners and corrective action, where necessary.	WRWFPL Project Rep
		SOIL, WATER QUALITY AND HYDROLOGY – Construction Soil and Water Mgt				
E15		Soil and water management measures consistent with <i>Managing Urban Stormwater Soils and Construction Vols 1 and 2, 4th Edition</i> (Landcom, 2004) shall be employed during the construction of the project to minimise soil erosion and the discharge of sediment and other pollutants to land and/or waters.	Stage 1	Complies	Approved Stage 1 CEMP – Sub Plan CSWQMP. Ongoing reviews of effectiveness of controls and maintenance. Risks are being reduced following completion of earthworks and progressive implementation of longer term controls and site revegetation program.	WRWFPL/ EPC/ TransGrid
E16		Where available, and of appropriate chemical and biological quality, stormwater, recycled water or other water sources shall be used in preference to potable water for construction activities, including concrete mixing and dust control.	Stage 1	Complies	Approved CEMP – Sub Plan CSWQMP Established compliant water supply agreements with host landowner(s) for construction water supply	WRWFPL/ EPC/ TransGrid
		TRANSPORT AND ACCESS – Road Dilapidation				
E17		Unless otherwise agreed by the Secretary , the Proponent shall commission an independent, qualified person or team to undertake the following in consultation with the relevant road authority:	Stage 1	Complies	Approved CEMP – CTAMP – Road Dilapidation Assessments done and submitted to Council(s). Agreement of Relevant Road Authorities obtained. Additional assessment for Ben Lomond Road (Alternate Sthn route)	WRWFPL

No	Sub	Detail of Condition	Timing	Complies	Status	Responsibility
	(a)	<p>Prior to the commencement of construction, review the proposed route and existing access provisions to the Wind Farm Site to determine whether the route and existing provisions allow for safe access of construction and operational vehicles associated with the project (including appropriate site distances and provisions for over-mass or over-dimensional transport and safety with other road users).</p> <p>Where improvements or changes to the proposed route are required, the Proponent shall implement these in consultation with the relevant road authority, prior to the commencement of construction and at the full expense of the Proponent;</p>	Stage 1	Complies	<p>Reviews of respective routes documented in CTAMP (part of CEMP).</p> <p>Consultation has occurred with RMS (WAD) agreement and Councils (Dilapidation Reports).</p> <p>Gwydir Hwy works and Ilparran upgrades completed under a WAD.</p> <p>RMS and Council agreed to certain works proceeding before later phases that involve over-dimensional transport and for which upgrades may be required.</p> <p>Upgrades to Ben Lomond route arranged with Councils and implemented prior to the use for that purpose. Deliveries by Ben Lomond route completed.</p>	WRWFPL
	(b)	<p>assess all roads proposed to be used for over-mass and/ or over-dimensional transport (including intersections, bridges, culverts and other road features) prior to the commencement of construction to determine whether the existing road condition can accommodate the proposed over-mass and/ or over-dimensional haulage.</p> <p>Where improvements are required, the Proponent shall implement these in consultation with the relevant road authority, prior to the commencement of over-mass and/ or over-dimensional transport and at the full expense of the Proponent (<i>same as for E17(a)</i>); and</p>	Stage 1	Complies	<p>CTAMP documents relevant matters and consultation with RMS and Councils. Dilapidation Reports and agreements with Councils.</p> <p>RMS WAD approval for Hwy upgrade works. Additional approvals obtained for Ben Lomond route and upgrades undertaken.</p> <p>Upgrades and/or improvements are implemented in accordance with requirements of relevant authority.</p>	WRWFPL

No	Sub	Detail of Condition	Timing	Compl es	Status	Responsibili ty
	(c)	upon determining the haulage route(s) for construction vehicles associated with the project, and prior to construction , an independent and qualified person or team shall undertake a Road Dilapidation Report . The report shall assess the current condition of the road(s) and describe mechanisms to restore any damage that may result due to traffic and transport related to the construction of the project. The Report shall be submitted to the relevant road authority for review prior to the commencement of haulage.	Stage 1	Compl es	Road Dilapidation Reports prepared and submitted to GISC, IC and Armidale Council. Agreement with GISC for reconciliation, restoration and process liability. Item 9.15 of GISC Mtg 28/4/16 Deed agreement between GISC & GWA for dilapidation of Council roads & Ilparran Road upgrade. Minutes 28 April 2016, Resolution 18.04/16 Additional agreement with Armidale Council for Ben Lomond route.	WRWFPL
		Following completion of construction, a subsequent report shall be prepared to assess any damage that may have resulted from the construction of the project. Measures undertaken to restore or reinstate roads affected by the project shall be undertaken in a timely manner, in accordance with the reasonable requirements of the relevant road authority, and at the full expense of the Proponent.	Stage 1 Post constru ct	Compl es	Assessment of roads where construction use is complete and associated reporting provided. WRWFPL has consulted relevant road authorities regarding scope of restoration works and implementation. Requirements completed.	WRWFPL
		Road Upgrades				
E17 A		Prior to the commencement of construction of the alternative transmission line (including associated substation and ancillary infrastructure), unless otherwise agreed with the Secretary, the Proponent shall: (a) upgrade the intersection of the Gwydir Highway and Spring Mountain Road to provide an Austroads Basic Right Turn (BAR) treatment and Austroads Basic Left Turn (BAL) treatment to the satisfaction of RMS and in accordance with	Stage 2	Not triggere d yet	Commencement would be undertaken as part of Stage 2 that is unlikely to proceed until at least Q3 2018. The upgrades addressed by Condition E17A have not been undertaken yet as not required for Stage 1.	WRWFPL

No	Sub	Detail of Condition	Timing	Complies	Status	Responsibility
		<p>current Austroads Guidelines, Australian Standards and RMS supplements;</p> <p>(b) upgrade the substation access point to a Typical Rural Property Access standard to the satisfaction of RMS and the relevant Councils; and</p> <p>(c) implement any upgrades at the primary access point that are identified in accordance with condition E22 (d) to the satisfaction of the relevant roads authorities</p>				
		ANCILLARY FACILITIES				
E18		Unless otherwise approved by the Secretary , the location of ancillary facilities associated with the construction of the project shall:	Stage 1	Complies	Approved CEMP including Ancillaries sub-plan (CCAFMP) CCAFMP updated 11 July 2016.	WRWFPL/ EPC/ TransGrid
	(a)	be located more than 50 metres from a waterway;		Complies	Table in CCAFMP shows compliance	WRWFPL/ EPC/ TransGrid
	(b)	be located within or adjacent to the project;		Complies	Table in CCAFMP shows compliance	WRWFPL/ EPC/ TransGrid
	(c)	have ready access to the road network;		Complies	Table in CCAFMP shows compliance	WRWFPL/ EPC/ TransGrid
	(d)	be located to minimise the need for heavy vehicles to travel through residential areas;		Complies	Table in CCAFMP shows compliance	WRWFPL/ EPC/ TransGrid
	(e)	be sited on relatively level land;		Complies	Table in CCAFMP shows compliance	WRWFPL/ EPC/ TransGrid
	(f)	be separated from nearest residences by at least 200 metres (or at least 300 metres for a temporary batching plant);		Complies	Table in CCAFMP shows compliance	WRWFPL/ EPC/ TransGrid
	(g)	not require vegetation clearing beyond that already required by the project;		Complies	Table in CCAFMP shows compliance	WRWFPL/ EPC/ TransGrid

No	Sub	Detail of Condition	Timing	Complies	Status	Responsibility
	(h)	not impact on heritage sites (including areas of archaeological sensitivity) beyond those already approved to be impacted by the project;		Complies	Table in CCAFMP shows compliance	WRWFPL/ EPC/ TransGrid
	(i)	not unreasonably affect the land use of adjacent properties;		Complies	Table in CCAFMP shows compliance	WRWFPL/ EPC/ TransGrid
	(j)	be above the 20 year ARI flood level unless a contingency plan to manage flooding is prepared and implemented; and		Complies	Table in CCAFMP shows compliance	WRWFPL/ EPC/ TransGrid
	(k)	provide sufficient area for the storage of raw materials to minimise, to the greatest extent practical, the number of deliveries required outside standard construction hours.		Complies	Table in CCAFMP shows compliance	WRWFPL/ EPC/ TransGrid
		The location of the ancillary facilities shall be identified in the Construction Environmental Management Plan required under condition E21 and include consideration of the above criteria. Where any of the above criteria cannot be met for any proposed ancillary facility, the Proponent shall demonstrate to the satisfaction of the Secretary that there will be no significant adverse impact from the facility's construction or operation. Such assessment(s) can be submitted separately or as part of the Construction Environmental Management Plan.	Stage 1	Complies	Shown on Layout Plans in Annex A of approved CEMP. Now being removed. Table in CCAFMP showing compliance with siting criteria Mod 3 identifies proposed locations and reasons for siting. CCAFMP updated for Mod 3 approval. Site of additional office in July 2016 update.	WRWFPL/ EPC/ TransGrid
E19		All construction ancillary facility sites shall be rehabilitated to at least their pre-construction condition, unless otherwise agreed by the affected landowner.	Stage 1	Complies	Rehabilitation of Ilparran compound, Batch plants (Northern, Southern and T20) well advanced, T22 maintenance area returned to use as T22 hardstand. Northern construction compound rehabilitation in progress.	WRWFPL/ EPC/ TransGrid
		ENVIRONMENTAL REPRESENTATIVE				
E20		Prior to the commencement of construction of the project, or as otherwise agreed by the Secretary, the Proponent shall nominate for the approval of the Secretary a suitably qualified and	Stage 1	Complies	DPE approval for nominated ER – Heather Tilley (Aurecon), DPE approved replacement delegate as	WRWFPL

No	Sub	Detail of Condition	Timing	Complies	Status	Responsibility
		experienced Environmental Representative(s) that is independent of the design, construction and operational personnel. The Proponent shall employ the Environmental Representative(s) for the duration of construction and operation, or as otherwise agreed by the Secretary . The Environmental Representative(s) shall:			back-up ER on 24 Feb 2017. Now site inducted. ER is engaged by WRWFPL ER has reviewed and endorsed pre-construction documents. Has also undertaken periodic (approx. monthly) site visits and reviews work areas and performance.	
	(a)	be the principal point of advice in relation to the environmental performance of the project	Stage 1	Noted	Noted – Advice sought as required. Kept informed of relevant plans.	WRWFPL
	(b)	monitor the implementation of environmental management plans and monitoring programs required under this approval and advise the Proponent upon the achievement of these plans/ programs	Stage 1	Complies	Review all plans for environmental management and endorse pre submission to DPE. Record Reviews and status	WRWFPL
	(c)	have responsibility for considering and advising the Proponent on matters specified in the conditions of this approval, and other licences and consents related to the environmental performance and impacts of the project	Stage 1	Complies	Advice regularly obtained. ER reviewed the internal audits of the construction work.	WRWFPL
	(d)	ensure that environmental auditing is undertaken in accordance with the project's Environmental Management System(s)	Stage 1	Complies	Audits as per approved CTP (D5)	WRWFPL
	(e)	be given the authority to approve/ reject minor amendments to the Construction Environmental Management Plan. What constitutes a "minor" amendment shall be clearly explained in the Construction Environmental Management Plan required under condition E21	Stage 1	Complies	"minor" amendment is defined in CEMP. Approval of Met Mast EMP. Review of CEMP updates. Assesses minor changes to project documented in Minor Consistency Review. Has provided review, comment and endorsement for minor updates of CEMP.	WRWFPL
	(f)	be given the authority and independence to require reasonable steps be taken to avoid or minimise unintended or adverse	Stage 1	Complies	Noted – WRWFPL respects the independence of ER role.	WRWFPL

No	Sub	Detail of Condition	Timing	Complies	Status	Responsibility
		environmental impacts, and failing the effectiveness of such steps, to direct that relevant actions cease immediately should an adverse impact on the environment be likely to occur			CEMP addresses this requirement.	
	(g)	be consulted in responding to the community concerning the environmental performance of the project where the resolution of points of conflict between the Proponent and the community is required.	Stage 1	Complies	ER to be kept aware of status of community engagement. Minutes of CCC available to ER.	WRWFPL
		CONSTRUCTION ENVIRONMENTAL MANAGEMENT PLAN				
E21		Prior to the commencement of construction, or as otherwise agreed by the Secretary, the Proponent shall prepare and implement (following approval) a Construction Environmental Management Plan for the project. The Plan shall outline the environmental management practices and procedures that are to be followed during construction, and shall be prepared in consultation with the relevant agencies and in accordance with the <i>Guideline for the Preparation of Environmental Management Plans</i> (Department of Infrastructure, Planning and Natural Resources, 2004). The Plan shall include, but not necessarily be limited to:	Stage 1	Complies	Submitted 20 October 2015 Approved by DPE December 2015 Review and update as necessary. CEMP reviewed and updated in April 2016 to address Mod 3 approval, EPL 20665 and DPE requirements of 11 Dec 2015. Updates to DPE on: 29/4/2016 – Full update 11/7/2016 Sub-Plan CCAFMP update. Further Dec 2016 updates CCAFMP & CTAMP. CTAMP update May 2017. Current Version on WRWF Website.	WRWFPL
	(a)	a description of activities to be undertaken during construction of the project (including staging and scheduling);	Stage 1	Complies	Included in CEMP together with layout plans in Annexure A.	WRWFPL
	(b)	statutory and other obligations the Proponent is required to fulfil during construction, including approval/consents, consultations and agreements required from authorities and other stakeholders under key legislation and policies;	Stage 1	Complies	Included in CEMP.	WRWFPL
	(c)	a description of the roles and responsibilities for relevant employees involved in the construction of the project, including	Stage 1	Complies	Documented in CEMP.	WRWFPL

No	Sub	Detail of Condition	Timing	Complies	Status	Responsibility
		relevant training and induction provisions for ensuring that employees, including contractors and sub-contractors are aware of their environmental and compliance obligations under these conditions of approval				
	(d)	an environmental risk analysis to identify the key environmental performance issues associated with the construction phase; and	Stage 1	Complies	ERM completed and included in CEMP (Annexure L). Reviewed and updated in November 2016.	WRWFPL
	(e)	details of how environmental performance will be managed and monitored to meet acceptable outcomes, including what actions will be taken to address identified potential adverse environmental impacts (including any impacts arising from the staging of the construction of the project). In particular, the following environmental performance issues shall be addressed in the Plan	Stage 1	Complies	ERM compiled issues management in CEMP. Section 6 and sub-plans	WRWFPL
	e-i	compounds and ancillary facilities management	Stage 1	Complies	In CEMP - CCAFMP	WRWFPL
	e-ii	noise and vibration	Stage 1	Complies	In CEMP - CNVMP	WRWFPL
	e-iii	traffic and access	Stage 1	Complies	In CEMP - CTAMP	WRWFPL
	e-iv	soil and water quality and spoil management	Stage 1	Complies	In CEMP - CSWQMP	WRWFPL
	e-v	air quality and dust management	Stage 1	Complies	In CEMP - Section 6.8	WRWFPL
	e-vi	management of Aboriginal and non-Aboriginal heritage	Stage 1	Complies	In CEMP - CHMP	WRWFPL
	e-vii	soil contamination, hazardous material and waste management	Stage 1	Complies	In CEMP Section 6 and CSWQMP	WRWFPL

No	Sub	Detail of Condition	Timing	Complies	Status	Responsibility
	e-viii	management of ecological impacts	Stage 1	Complies	In CEMP - CFFMP	WRWFPL
	e-ix	hazard and risk management, including bushfire risk.	Stage 1	Complies	Addressed in CEMP incl. Bushfire Risk Management Plan	WRWFPL
		The CEMP shall be submitted for the approval of the Secretary no later than one month prior to the commencement of construction, or as otherwise agreed by the Secretary . The Plan may be prepared in stages, however, construction works shall not commence until written approval has been received from the Secretary .	Stage 1	Complies	Submitted 20 October 2015 Approved December 2015 ER endorsed changes 29 April 2016 for Mod 3. Copy to DPE 29 April 2016. Further update July and Dec 2016.	WRWFPL
		Note: The approval of a Construction Environmental Management Plan does not relieve the Proponent of any other requirement associated with this project approval. If there is an inconsistency with an approved Construction Environmental Management Plan and the conditions of this project approval, the requirements of this project approval prevail.	Stage 1	Noted	<u>All project staff to note this!</u> Conditions take precedence over the approved CEMP. Mod 3 Approval confirmed minor variations to layout	All
E22		As part of the Construction Environmental Management Plan for the project required under condition E21 the Proponent shall prepare and implement:	Stage 1	Complies	All sub-plans incorporated in approved CEMP	WRWFPL
E22	(a)	a Construction Compound and Ancillary Facilities Management Plan to detail the management of site compounds associated with the project. The Plan shall include but not necessarily be limited to:	Stage 1	Complies	CCAFMP prepared and submitted with CEMP Updated July and December 2016.	WRWFPL
	a-i	a description of the facility, its components and the surrounding environment	Stage 1	Complies	Included	WRWFPL
	a-ii	details of the activities to be carried out at each facility, including the hours of use and the storage of dangerous and hazardous goods	Stage 1	Complies	Included	WRWFPL
	a-iii	details of the mitigation and management procedures specific to the facility that would be implemented to minimise environmental	Stage 1	Complies	Included	WRWFPL

No	Sub	Detail of Condition	Timing	Complies	Status	Responsibility
		and amenity impacts and an assessment of the adequacy of the mitigation or offsetting measures				
	a-iv	identification of the timing for the completion of activities at the facility and how the site will be decommissioned (including any necessary rehabilitation)	Stage 1	Complies	Included	WRWFPL
	a-v	appropriate monitoring, review and amendment mechanisms.	Stage 1	Complies	CCAFMP Section 7	WRWFPL
E22	(b)	a Construction Noise and Vibration Management Plan to detail how construction noise and vibration impacts will be minimised and managed. The Plan shall be consistent with the guidelines contained in the <i>Interim Construction Noise Guidelines</i> (DECC, 2009) and shall include, but not necessarily be limited to	Stage 1	Complies	Prepared and reviewed by DPE, Jeff Parnell. CEMP approved.	WRWFPL
	b-i	identification of sensitive receivers and relevant construction noise and vibration goals applicable to the project;	Stage 1	Complies	Identified - Some neighbour agreements, more being sought.	WRWFPL
	b-ii	details of construction activities and an indicative schedule for construction works; including the identification of key noise and/or vibration generating construction activities (based on representative construction scenarios, including at ancillary facilities) that have the potential to generate noise and/or vibration impacts on surrounding sensitive receivers, particularly residential areas	Stage 1	Complies	Site Manager provided activity description in NVMP, ERM has assigned noise profiles.	WRWFPL
	b-iii	identification of reasonable and feasible measures proposed to be implemented to minimise and manage construction noise and vibration impacts (including construction traffic noise impacts)	Stage 1	Complies	ERM has defined mitigation measures in CNVMP	WRWFPL
	b-iv	procedures and mitigation measures to ensure relevant vibration and blasting criteria are achieved, including a suitable blast management program, applicable buffer distances for vibration intensive works, use of low-vibration generating equipment/vibration dampeners or alternative construction methodology, and	Stage 1	Complies	In CNVMP	WRWFPL

No	Sub	Detail of Condition	Timing	Compl es	Status	Responsibili ty
		pre- and post- construction dilapidation surveys of sensitive structures where blasting and/ or vibration is likely to result in damage to buildings and structures (including surveys being undertaken immediately following a monitored exceedance of the criteria); and				
	b-v	a description of how the effectiveness of these actions and measures would be monitored during the proposed works, clearly indicating how often this monitoring would be conducted, the locations where monitoring would take place, how the results of this monitoring would be recorded and reported, and, if any exceedance is detected, how any non-compliance would be rectified	Stage 1	Compl es	In CNVMP	WRWFPL
	b-vi	an out-of-hours work (OOHW) protocol for the assessment, management and approval of works outside of standard construction and decommissioning hours as defined in condition E5 and E7, including a risk assessment process under which an Environmental Representative may approve out-of-hour construction activities deemed to be of low environmental risk and refer high risk works for the Secretary's approval. The OOHW protocol shall detail standard assessment, mitigation and notification requirements for high and low risk out-of-hour works, and detail a standard protocol for referring applications to the Secretary; and	Stage 1	Compl es	OOHW in CNVMP – Reviewed by Jeff Parnell, DPE. CEMP approved Some OOHW applications made and approved by ER. OOHW has occurred without complaints received in respect of OOHW.	WRWFPL
	b-vii	mechanisms for the monitoring, review and amendment of this plan.	Stage 1	Compl es	Included in CEMP	WRWFPL
E22	(c)	a Construction Traffic and Access Management Plan to manage construction traffic and access impacts of the project. The plan shall be developed in consultation with the relevant road authority and shall include, but not necessarily be limited:	Stage 1	Complie s	CTAMP prepared and circulated to GISC, IC and RMS. Comments received from GISC and IC. CEMP approved. Updated Dec 2016. Updated for Ben Lomond route (Alternate Southern OD route) May 2017.	WRWFPL

No	Sub	Detail of Condition	Timing	Compl es	Status	Responsibili ty
	c-i	identification of construction traffic routes and construction traffic volumes (including heavy vehicle/ spoil haulage) on these routes	Stage 1	Compl es	In CTAMP. Updated for Ben Lomond OD vehicle route.	WRWFPL
	c-ii	details of vehicle movements for construction sites and site compounds including parking, dedicated vehicle turning areas, and ingress and egress points	Stage 1	Compl es	In CTAMP	WRWFPL
	c-iii	identification of construction impacts that could result in disruption of traffic, public transport, pedestrian and cycle access, property access, including details of oversize load movements;	Stage 1	Compl es	In CTAMP	WRWFPL
	c-iv	details of management measures to minimise traffic impacts, including temporary road work traffic control measures, onsite vehicle queuing and parking areas and management measures to minimise peak time congestion and measures to ensure safe pedestrian and cycle access	Stage 1	Compl es	In CTAMP	WRWFPL
	c-v	a response plan which sets out a proposed response to any traffic, construction or other incident; and	Stage 1	Compl es	In CTAMP	WRWFPL
	c-vi	mechanisms for the monitoring, review and amendment of this plan.	Stage 1	Compl es	In CTAMP	WRWFPL
	(d)	Prior to commencing construction of the alternative transmission line (including associated substation and ancillary infrastructure), unless otherwise agreed with the Secretary, the Proponent must update the Construction Traffic and Access Management Plan required under condition E22 (c) to address traffic and access arrangements associated with the construction of the alternative transmission line and associated infrastructure at the primary access point for the project. The updates to the plan must be prepared by a suitably qualified person whose appointment has been endorsed by RMS, in consultation with the RMS and relevant Councils, and to the satisfaction of the Secretary. The updates to the plan must include:	Stage 2	Not triggere d yet	Construction of Transmission line to be coordinated with Stage 2 that is not expected to proceed before Q2 2018. Update of CTAMP would occur prior to Stage 2 construction works.	WRWFPL

No	Sub	Detail of Condition	Timing	Complies	Status	Responsibility
		(i) a detailed analysis of volumes and distribution of construction traffic; (ii) a protocol for assessing road safety and intersection performance, and determining whether any additional upgrades are required to maintain safety of turning vehicles; and (iii) identification of any necessary road upgrades, and detailed arrangements for implementation.				
E22	(e)	a Construction Soil and Water Quality Management Plan to manage surface and groundwater impacts during construction of the project. The plan shall be developed in consultation with CL&W and include, but not necessarily be limited to:	Stage 1	Complies	CSWQMP prepared and submitted to CL&W. CEMP approved.	WRWFPL
	e-i	details of construction activities and their locations, which have the potential to impact on water courses, storage facilities, stormwater flows, and groundwater	Stage 1	Complies	In CSWQMP	WRWFPL
	e-ii	surface water and ground water impact assessment criteria consistent with Australian and New Zealand Environment Conservation Council (ANZECC) guidelines	Stage 1	Complies	Addressed	WRWFPL
	e-iii	management measures to be used to minimise surface and groundwater impacts, including details of how spoil and fill material required by the project will be sourced, handled, stockpiled, reused and managed; erosion and sediment control measures; and the consideration of flood events	Stage 1	Complies	In CSWQMP	WRWFPL
	e-iv	management measures for contaminated material and a contingency plan to be implemented in the case of unanticipated discovery of contaminated material during construction	Stage 1	Complies	In CSWQMP	WRWFPL
	e-v	a description of how the effectiveness of these actions and measures would be monitored during the proposed works, clearly indicating how often this monitoring would be undertaken, the locations where monitoring would take place, how the results of	Stage 1	Complies	In CSWQMP	WRWFPL

No	Sub	Detail of Condition	Timing	Complies	Status	Responsibility
		the monitoring would be recorded and reported, and, if any exceedance of the criteria is detected how any non-compliance can be rectified; and				
	e-vi	mechanisms for the monitoring, review and amendment of this plan.	Stage 1	Complies	In CSWQMP	WRWFPL
E22	(f)	a Construction Heritage Management Plan to detail how construction impacts on Aboriginal and Historic heritage will be minimised and managed. The sub-plan shall be developed in consultation with the OEH and registered Aboriginal stakeholders (for Aboriginal heritage), and include, but not necessarily be limited to:	Stage 1	Complies	CHMP prepared and issued to Registered Aboriginal Stakeholders and OEH. Comments addressed. Updated to address sites destroyed by landowner clearing along fence-line. CEMP approved.	WRWFPL
	f-i	In relation to Aboriginal Heritage:	Stage 1			
	f-i-a	details of further investigation and identification of Aboriginal cultural heritage sites within the project area	Stage 1	Complies	Survey undertaken to relocate sites. Confirmed two sites destroyed, site cards updated and submitted to OEH	WRWFPL
	f-i-b	details of management measures to be carried out in relation to Aboriginal heritage, including a detailed methodology and strategies for protection, monitoring, salvage, and conservation, of sites and items associated with the project	Stage 1	Complies	In CHMP	WRWFPL
	f-i-c	procedures for dealing with previously unidentified Aboriginal objects (excluding human remains) including cessation of works in the vicinity, assessment of the significance of the item(s) and determination of appropriate mitigation measures including when works can re-commence by a suitably qualified archaeologist in consultation with the Department, the OEH and registered Aboriginal stakeholders and assessment of the consistency of any new Aboriginal heritage impacts against the approved impacts of the project, and registering of the new site in the OEH's Aboriginal Heritage Information Management System (AHIMS) register;	Stage 1	Complies	In CHMP	WRWFPL

No	Sub	Detail of Condition	Timing	Compl es	Status	Responsibili ty
	f-i-d	procedures for dealing with human remains, including cessation of works in the vicinity and notification of the Department, NSW Police Force, the OEH and registered Aboriginal stakeholders and not recommencing any works in the area unless authorised by the OEH and/ or the NSW Police Force	Stage 1	Compl es	In CHMP	WRWFPL
	f-i-e	heritage training and induction processes for construction personnel (including procedures for keeping records of inductions) and obligations under the conditions of this approval and <i>National Parks and Wildlife Act 1974</i> (where relevant) including site identification, protection and conservation of Aboriginal cultural heritage; and	Stage 1	Compl es	In CHMP	WRWFPL
	f-i-f	procedures for ongoing Aboriginal consultation and involvement for the duration of the project; and	Stage 1	Compl es	Updated stakeholder list through advertisements for EOI	WRWFPL
	f-ii	In relation to Historic Heritage:	Stage 1	Complie s		WRWFPL
	f-ii-a	identification of heritage items directly and indirectly affected by the project	Stage 1	Compl es	IN CHMP	WRWFPL
	f-ii-b	details of management measures to be implemented to prevent and minimise impacts on heritage items (including further heritage investigations, archival recordings and/ or measures to protect unaffected sites during construction works in the vicinity)	Stage 1	Complie s	In CHMP	WRWFPL
	f-ii-c	details of monitoring and reporting requirements for impacts on heritage items	Stage 1	Compl es	In CHMP	WRWFPL
	f-ii-d	procedures for dealing with previously unidentified heritage objects, (including cessation of works in the vicinity, assessment of the significance of the item(s) and determination of appropriate mitigation measures including when works can re-commence by a suitably qualified and experienced archaeologist in consultation with the OEH and the Department, and assessment of the	Stage 1	Compl es	In CHMP	WRWFPL

No	Sub	Detail of Condition	Timing	Compl es	Status	Responsibili ty
		consistency of any new heritage impacts against the approved impacts of the project; and				
	f-ii-e	heritage training and induction processes for construction personnel (including procedures for keeping records of inductions and obligations under the <i>Heritage Act 1977</i>) including site identification, protection and conservation of non-Aboriginal cultural heritage; and	Stage 1	Compl es	In CHMP	WRWFPL
	f-iii	mechanisms for the monitoring, review and amendment of this plan.	Stage 1	Compl es	In CHMP	WRWFPL
	(g)	a Construction Flora and Fauna Management Plan to detail how construction impacts on ecology will be minimised and managed. The Plan shall be developed in consultation with the OEH and shall include, but not necessarily be limited to:	Stage 1	Complie s	CFFMP in approved CEMP OEH consulted on several occasions	WRWFPL
	g-i	plans for impacted and adjoining areas showing vegetation communities; important flora and fauna habitat areas(including identified Rough-barked Angophora tree/s containing multiple hollows); locations where threatened species, populations or ecological communities have been recorded; including pre-clearing surveys by a suitably qualified ecologist to confirm the location of threatened flora (including Blackbutt Candlebark species) and fauna species and associated habitat features;	Stage 1	Complie s	In CFFMP Stage 2 development requires CFFMP update to address the additional requirements.	WRWFPL
	g-ii	the identification of areas to be cleared and details of management measures (such as fencing and establishment of buffer zones, clearing procedures, removal and relocation of fauna during clearing, habitat tree management and construction worker education) to avoid any residual habitat damage or loss and to minimise or eliminate time lags between the removal and subsequent replacement of habitat;	Stage 1	Complie s	RPS described ecological constraints mapping and management measures. Earthworks contractor also engaged Geolink for additional pre-clearing survey. Zinfra minimising clearing for 132kV transmission line.	WRWFPL

No	Sub	Detail of Condition	Timing	Complies	Status	Responsibility
	g-iii	rehabilitation details, including identification of flora species and sources, the reuse of cleared flora, and measures for the management and maintenance of rehabilitated areas	Stage 1	Complies	In CFFMP	WRWFPL
	g-iv	weed management measures focusing on early identification of invasive weeds and effective management controls	Stage 1	Complies	In CFFMP	WRWFPL
	g-v	a description of how the effectiveness of these actions and measures would be monitored during the proposed works, clearly indicating how often this monitoring would be undertaken, the locations where monitoring would take place, how the results of the monitoring would be recorded and reported, and, if any exceedance of the criteria is detected how any non-compliance can be rectified;	Stage 1	Complies	In CFFMP	WRWFPL
	g-vi	a procedure for dealing with unexpected EECs/threatened species identified during construction, including cessation of work and notification of the OEH, determination of appropriate mitigation measures in consultation with the OEH (including relevant re-location measures) and updating of ecological monitoring and/ or biodiversity offset requirements; and	Stage 1	Complies	In CFFMP	WRWFPL
	g-vii	mechanisms for the monitoring, review and amendment of this plan	Stage 1	Complies	In CFFMP	WRWFPL

SCHEDULE F - OPERATIONAL ENVIRONMENTAL MANAGEMENT - HAZARD AND RISK – Safety Management System

No	Sub	Detail of Condition	Timing	Compliance	Status of Compliance	Responsibility
F1		At least two months prior to the commencement of commissioning, the Proponent shall prepare a report outlining a comprehensive Safety Management System, covering all on-site systems relevant to ensuring the safe operation of the project. The report shall clearly specify all safety related procedures, responsibilities and policies, along with details of mechanisms for ensuring adherence to the procedures. Records shall be kept at the site and shall be available for inspection by the Department upon request. The Safety Management System shall be developed in accordance with the Department's Hazardous Industry Planning Advisory Paper No. 9, 'Safety Management', and should include:	Stage 1	Complies	Complete A comprehensive Safety Management System has been prepared for the Stage 1 project.	WRWFPL
	(a)	procedures and programs for the maintenance and testing of the safety related equipment to ensure its integrity over the life of the project; and	Stage 1	Complies	Complete	WRWFPL
	(b)	an outline of a documented procedure for the management of change.	Stage 1	Complies	Complete	WRWFPL
		HAZARD AND RISK – Television and Radio Interference				
F2		Prior to the commencement of commissioning of the project, the Proponent shall undertake an assessment of the existing quality of the television/radio transmission available at a representative sample of receivers located within 5 kilometres of any wind turbine.	Complete	Complies	Prelim assessment undertaken by LDA February 2015. Assessment of reception undertaken and reported 30/9/2016 with options for resolving impacts. Mitigation measures applied where risk of interference identified.	WRWFPL
F3		In the event of a complaint from a receptor located within 5 kilometres of a wind turbine regarding television/radio transmission during the operation of the project, the Proponent shall investigate the quality of transmission at the receptor compared with the pre-commissioning assessment and where any transmission problems can be reasonably attributable to the project, rectify the problems within three months of	Operation (Future)	Complies	Solution may avoid risk of interference. Solution, if required, to be confirmed and implemented in timely manner. Ensure Glen Innes reception (via Carpenters Hill) not impacted.	WRWFPL

No	Sub	Detail of Condition	Timing	Compliance	Status of Compliance	Responsibility
		the receipt of the complaint, through the implementation of measures including:				
	(a)	modification to or replacement of receiving antenna	Operation	Complies	May be addressed by alternative solution. Some mitigation measures installed.	WRWFPL
	(b)	installation and maintenance of a parasitic antenna system	Operation	Complies	May be addressed by alternative solution. Some mitigation measures installed.	WRWFPL
	(c)	provision of a land line between the affected receptor and an antenna located in an area of favourable reception; and/or	Operation	Complies	May be addressed by alternative solution. Some mitigation measures installed.	WRWFPL
	(d)	other feasible measures	Operation	Complies	To be confirmed	WRWFPL
		If interference cannot be overcome by the measures outlined in (a) to (d), the Proponent shall negotiate with the impacted landowner(s) about installing and maintaining a satellite receiving antenna. The Proponent shall be responsible for all costs associated with any such mitigation measures.	Operation	Complies	Requirement to be assessed at the time. Solution for Glen Innes involves optic fibre connection to Glen Innes and transmission to Carpenters Hill for distribution in local area. Solution has been installed.	WRWFPL
		HAZARD AND RISK – Ecology – Rehabilitation and Revegetation				
F4		Disturbance to watercourses and/or associated riparian vegetation shall be rehabilitated to a standard equal to or better than the existing condition in consultation with the CL&W and DPI (Fisheries) within six months of the cessation of construction activities at the relevant area. Any revegetation measures undertaken shall be monitored and maintained by the Proponent consistent with the requirements of condition F5.	Construction/Post construction	Complies	Requirements in approved CEMP – Section 6.13 and CFFMP. Contractor has implemented progressive revegetation and rehabilitation program.	WRWFPL
F5		The Proponent shall implement a revegetation and rehabilitation program for all areas of the project footprint which are disturbed during the construction of the project and which are not required for the ongoing operation of the project, including temporary construction	Latter part of Construction and early	Complies	Program of progressive rehabilitation has been commenced. Initial hydromulching not	WRWFPL

No	Sub	Detail of Condition	Timing	Compliance	Status of Compliance	Responsibility
		facility sites and sections of construction access roads. The Proponent shall ensure that all revegetation measures are implemented progressively where possible and in all cases within six months of the cessation of construction activities at the relevant area. Unless otherwise agreed to by the Secretary, the Proponent shall monitor and maintain the health of all revegetated areas until such time that the plantings have been verified by an independent and suitably qualified expert (whose appointment has been agreed to by the Secretary) as being well established, in good health and self-sustaining.	Operations		<p>fully effective and follow-up has been required.</p> <p>EPC and BoP contractors periodically agree areas requiring rehabilitation and EPC monitors effectiveness of rehabilitation.</p> <p>Zinfra work covers less area than BoP works. Zinfra has been mulching felled timber and seeding disturbed areas.</p> <p>Soil Conservation Service nominated to do verifications. DPE provided endorsement by email.</p>	
		NOISE				
F6		<p>Background Noise Survey and Verification Report</p> <p>Prior to commissioning of the wind farm, the Proponent shall provide an updated determination of background noise levels at representative non-associated residence locations and calculate the appropriate noise criteria according to condition F7. The report should also predict the noise levels impacts to all non-associated residences or representative clusters of non-associated residences that will experience wind turbine noise greater than 35 dB(A) when turbines are operating at rated power. The report is to be prepared in consultation with the EPA and should meet the requirements set out in Appendix 2.</p>	Stage 1	<p>Complies</p> <p>EPA has confirmed requirements are complete.</p>	<p>Pre-construction background noise monitoring assessment (Dec 2015/Feb2016) completed.</p> <p>Permanent met masts used for reference wind speeds for background monitoring pre-construction and, compliance monitoring once operational.</p> <p>Reports prepared and submitted to DPE and EPA, 01 May 2017. EPA has amended EPL 20665 accordingly. No DPE response.</p>	WRWFPL
F7		<p>Operational Noise Criteria – Wind Turbines</p> <p>The Proponent shall ensure that the noise generated by the operation of wind turbines does not exceed the greater of:</p>	Stage 1.	Not triggered yet	Design compliant based on predicted noise levels for proposed layout and turbine models. Report for F6 sent to DPE and EPA.	WRWFPL
	(a)	35 dB(A); or	Stage 1	Complies	To be assessed (noise compliance monitoring) once wind farm fully operational.	WRWFPL

No	Sub	Detail of Condition	Timing	Compliance	Status of Compliance	Responsibility
	(b)	the existing background noise level for each integer wind speed from cut-in speed to the rated power of the wind turbine generators, by more than 5 dB(A).	Stage 1	Complies	To be assessed (noise compliance monitoring) once wind farm fully operational.	WRWFPL
		<p>Unless otherwise replaced by an equivalent NSW wind farm noise guideline, noise generated by the project is to be measured in accordance with the relevant requirements of Sections 3.1 and 3.2 of the South Australian Environment Protection Authority's Wind Farms Environmental Noise Guidelines 2009, as modified by the provisions in Appendix 3.</p> <p>However, these criteria do not apply if the Proponent has an agreement with the owner/s of the relevant residence or land to generate higher noise levels, and the Proponent has advised the Department in writing of the terms of this agreement.</p>	Stage 1	Complies	<p>Addressed by Reports for F6 and will be referenced for operational noise compliance monitoring.</p> <p>EPL 20665 updated.</p>	WRWFPL
F8		<p>Operational Noise Criteria – Ancillary Infrastructure</p> <p>The Proponent shall ensure that the noise generated by the operation of ancillary infrastructure does not exceed 35 dB(A) LAeq(15 minute) at any non-associated residence.</p> <p>Noise generated by the project is to be measured in accordance with the relevant requirements of the NSW Industrial Noise Policy (as may be updated from time-to- time), as modified by the provision in Appendix 3.</p> <p>However, these criteria do not apply if the Proponent has an agreement with the owner/s of the relevant residence or land to generate higher noise levels, and the Proponent has advised the Department in writing of the terms of this agreement.</p>	Stage 1	Complies	<p>Substation is main source of ancillary infrastructure noise. Substation Noise level at the nearest non-associated residence (over 3 km distance) is expected to be well below 35 dB(A) LAeq(15 minute).</p> <p>Noise Compliance Test Plan includes substation.</p>	WRWFPL
F9		<p>Operating Conditions</p> <p>The Proponent shall:</p>	Stage 1	See below	See below	<p>WRWFPL</p> <p>Future</p>

No	Sub	Detail of Condition	Timing	Compliance	Status of Compliance	Responsibility
F9	(a)	Implement best management practice to minimize the construction, operational, decommissioning and road traffic noise and vibration of the project;	Stage 1	Complies	Construction noise management has been effective and minimal complaints received. Pre-operations noise checks will be done.	WRWFPL
F9	(b)	implement sector management of wind turbines to manage any wind directions or meteorological conditions that are found to result in exceedances of the noise criteria in condition F7;	Stage 1 Operation	Not Triggered yet	Based on assessment of predicted noise levels, sector management not expected to be required but can be applied if necessary.	WRWFPL
F9	(c)	undertake noise monitoring within 3 months of the commissioning of the wind farm, or other timing as may be agreed by the Secretary, to determine whether the project is complying with the relevant conditions of this approval; and	Stage 1 Operation	Not Triggered yet	Future requirement when wind farm fully operational. Noise Compliance Test Plan submitted to DPE and EPA to obtain endorsement.	WRWFPL
F9	(d)	carry out further noise monitoring if required by the Secretary, to the satisfaction of the Secretary.	Stage 1 Operation	Not Triggered yet	As required, once operational.	WRWFPL
F10 to F18		Deleted	NA		NA	NA
		OPERATIONAL ENVIRONMENTAL MANAGEMENT				
F19		Prior to the commencement of operation, or as otherwise agreed by the Secretary, the Proponent shall prepare and implement (following approval) an Operation Environmental Management Plan for the project. The Plan shall outline the environmental management practices and procedures that are to be followed during operation, and shall be prepared in consultation with relevant agencies and in accordance with the <i>Guideline for the Preparation of Environmental Management Plans</i> (Department of Infrastructure, Planning and	Stage 1 Operations	Complies	OEMP prepared, submitted to DPE for review and has been approved by DPE on 14 September 2017 for implementation. O&M Service Team issued with OEMP.	WRWFPL Future

No	Sub	Detail of Condition	Timing	Compliance	Status of Compliance	Responsibility
		Natural Resources, 2004). The Plan shall include, but not necessarily be limited to:				
F19	(a)	a description of activities to be undertaken during operation of the project (including staging and scheduling);	Stage 1	Complies	OEMP approved by DPE 14 Sept 2017. Section 1.5 of OEMP	WRWFPL
F19	(b)	statutory and other obligations that the Proponent is required to fulfil during operation, including approval/consents, consultations and agreements required from authorities and other stakeholders under key legislation and policies;	In preparation	Complies	OEMP approved by DPE 14 Sept 2017. Section 2 of OEMP	WRWFPL
F19	(c)	overall environmental policies, guidelines and principles to be applied to the operation of the project;	In preparation	Complies	OEMP approved by DPE 14 Sept 2017. Section 3.1 and 3.2 of OEMP	WRWFPL
F19	(d)	a description of the roles and responsibilities for relevant employees involved in the operation of the project, including relevant training and induction provisions for ensuring that employees are aware of their environmental and compliance obligations under these conditions of approval;	In preparation	Complies	OEMP approved by DPE 14 Sept 2017. Section 3.4 of OEMP	WRWFPL
F19	(e)	an environmental risk analysis to identify the key environmental performance issues associated with the operation phase; and	In preparation	Complies	OEMP approved by DPE 14 Sept 2017. Section 4 of OEMP	WRWFPL
F19	(f)	details of how environmental performance would be managed and monitored to meet acceptable outcomes, including what actions will be taken to address identified potential adverse environmental impacts, including those safeguards and mitigation measures detailed in the EA (and any impacts arising from the staging of the construction of the project).	In preparation	Complies	OEMP approved by DPE 14 Sept 2017. Section 3 and 5 of OEMP	WRWFPL

No	Sub	Detail of Condition	Timing	Compliance	Status of Compliance	Responsibility
F19	(g)	Details of how sector management would be used to ensure that operational noise criteria are not exceeded	In preparation	Complies	OEMP approved by DPE 14 Sept 2017. Section 5.1 of OEMP	WRWFPL
F19		<p>The Plan shall be submitted for the approval of the Secretary no later than one month prior to the commencement of operation, or as otherwise agreed by the Secretary. Operation shall not commence until written approval has been received from the Secretary. Upon receipt of the Secretary's approval, the Proponent shall make the Plan publicly available as soon as practicable.</p> <p>Note: The approval of an Operation Environmental Management Plan does not relieve the Proponent of any other requirement associated with this project approval. If there is an inconsistency with an approved Operation Environmental Management Plan and the conditions of this project approval, the requirements of this project approval prevail.</p>	Due at least one month prior to wind farm operation	Complies	<p>The OEMP was submitted to DPE on 24 August 2017 and approved by DPE 14 Sept 2017.</p> <p>All project personnel to note this.</p>	WRWFPL
F20		Deleted	NA	NA	NA	NA

SCHEDULE G - ADDITIONAL PROCEDURES Land Acquisition and Criteria					Timing	Compliance	Status	Responsibility
G1	Should the Proponent determine to proceed with any or all of the turbines listed in Table 2, the Proponent shall notify in writing the owner of the property listed in the corresponding row of the Table that it intends to proceed and that it is initiating the acquisition process.				Stage 2	Complies	Turbines 32 and 33 not part of Stage 1. Property acquired by WRWFPL	Complete
Table 2 – Turbines to be deleted or landholdings to be acquired					NA	NA	Property acquired by WRWFPL	Complete
	Turbines to be deleted	or	Property to be acquired	Relevant Lot and DP numbers	Pre-construction.	Complies	Property acquired by WRWFPL	Complete
G1	Turbines 32 and 33		“Tangari”	Lot 154 DP753260	Stage 1	Complies	Turbines 32 and 33 Not part of Stage 1 – Property acquired and renamed as Tangari.	Complete
G2	At the request in writing of the owner(s) of any of the lots notified under condition G1, if such a request is made within three months of the date of service of the notification required under condition G1 and provided that this approval has not lapsed or been surrendered within that time, the Proponent shall proceed to acquire the relevant landholdings referred to under this condition.				NA	NA	Not relevant Stage 1	Complete
G3	Within three months of receiving a written request from a landowner with acquisition rights under condition G2 of this approval, the Proponent shall make a binding written offer to the landowner to purchase the land specified in the request , with such offer to remain open for a period of three months after receipt and shall not be reduced, based on:				NA	NA	Not relevant Stage 1	Complete

	SCHEDULE G - ADDITIONAL PROCEDURES Land Acquisition and Criteria		Timing	Compliance	Status	Responsibility
	(a)	the current market value of the landowner's interest in the land at the date of the written request, as if the land was unaffected by the project, having regard to the:	NA	NA	Not relevant Stage 1	Complete
	a	(i) existing and permissible use(s) of the land, in accordance with applicable planning instruments at the date of the written request;	NA	NA	Not relevant Stage 1	Complete
	a	(ii) presence of improvements on the land and/or any approved building or structure which has been physically commenced at the date of the landowner's written request, and is due to be completed subsequent to that date;	NA	NA	Not relevant Stage 1	Complete
	(b)	reasonable costs associated with obtaining legal and expert advice for determining the acquisition price of the land, and the terms upon which it is to be acquired; and	NA	NA	Not relevant Stage 1	Complete
	(c)	reasonable compensation for any disturbance caused by the land acquisition process.	NA	NA	Not relevant Stage 1	Complete
		<p>If, after three months of receipt of the Proponent's offer above, the Proponent and landowner cannot agree on the acquisition price of the land, including costs and compensation under (b) and (c) above, and/or the terms upon which the property is to be acquired, then either party may refer the matter to the Secretary for resolution.</p> <p>Upon receiving such a request, the Secretary shall request the President of the New South Wales Division of the Australian Property Institute to appoint a suitably qualified and experienced independent valuer, being a Fellow of the Institute, to consider submissions from both parties, and determine a fair and reasonable acquisition price for the land, including the reasonable compensation for disturbance caused by the land acquisition process associated with (c) above, and/or the terms upon which the property is to be acquired. This</p>	NA	NA	Not relevant Stage 1	Complete

	SCHEDULE G - ADDITIONAL PROCEDURES Land Acquisition and Criteria	Timing	Compliance	Status	Responsibility
	process is to be completed within three months of the Secretary receiving any such request.				
	Within 14 days of receiving the independent valuer's determination, the Proponent shall make a binding written offer to the landowner (including reasonable costs and compensation under (b) and (c) above). The offer, to purchase the property at a price not less than the independent valuer's determination and otherwise on the terms specified in that determination shall remain open for a period of three months after receipt by the landowner and shall not be reduced.	NA	NA	Not relevant Stage 1	Complete
	If the landowner refuses to accept the offer within three months of the date of the Proponent's offer, the Proponent's obligations to acquire the land concerned shall cease.	NA	NA	Not relevant Stage 1	Complete
G3	If the landowner accepts either of the offers above and thereafter the Proponent fails to acquire the land on terms consistent with the relevant offer within three months of acceptance, the relevant turbines are to be deleted.	NA	NA	Not relevant Stage 1	Complete
G4	The Proponent shall bear the reasonable costs of any valuation or survey assessment requested by the independent valuer or the Secretary and the costs of determination referred to under condition G3.	NA	NA	Not relevant Stage 1	Complete
G5	If the Proponent and landowner agree that only part of the landowner's property shall be acquired, the Proponent shall pay all reasonable costs associated with obtaining Council approval for any plan of subdivision (where permissible), and registration of the plan with the Office of the Registrar-General.	NA	NA	Not relevant Stage 1	Complete

	SCHEDULE G - ADDITIONAL PROCEDURES Land Acquisition and Criteria	Timing	Compliance	Status	Responsibility
G6	If the Proponent has not initiated the acquisition process referred to in condition G1 for any Lot specified in any request under condition G2 by 4 years from the date of this approval or prior to the commencement of any construction activities in the relevant sector of the project, whichever occurs earliest, the relevant nominated turbine(s) relating to that Lot identified in condition G1 are to be deleted from the project.	NA	NA	Not relevant Stage 1	Complete
G7	If the Proponent has initiated the acquisition process referred to in condition G1 by the earlier of the dates determined in accordance with condition G6 and the owners of the relevant Lot to be acquired notify the Proponent in writing that they do not consent to their Lot being acquired, or fail to provide a written request to the Proponent for all or part of their land to be acquired in accordance with condition G2, then the requirement either to acquire that land under condition G2 or to delete the nominated relevantly applicable turbine from the project under condition G6 lapses.	NA	NA	Not relevant Stage 1	Complete
	DECOMMISSIONING				
G8	Within 18 months of the cessation of operation of the project, unless the Secretary agrees otherwise , the site shall be decommissioned and returned by the Proponent, as far as practicable, to its condition prior to the commencement, in consultation with the relevant landowner(s) and to the satisfaction of the Secretary (and in accordance with the Decommissioning and Rehabilitation Plan required under condition G10)	End Operation	Not Triggered yet	Future requirement	WRWFPL
G8	All generating facilities and associated infrastructure (including but not necessarily limited to the White Rock substation and transformers, switchyard, operation and maintenance facility, overhead transmission lines and access roads) shall be removed from the site unless otherwise agreed by the Secretary . Project related infrastructure	End Operation	Not Triggered yet	Future requirement	WRWFPL

	SCHEDULE G - ADDITIONAL PROCEDURES Land Acquisition and Criteria	Timing	Compliance	Status	Responsibility
	(including access roads) may only be retained on site, where the Proponent has demonstrated to the satisfaction of the Secretary prior to the commencement of decommissioning, that these components: are permissible under the site's statutory landuse provisions in force upon commencement of the decommissioning; would not pose an ongoing impediment to permissible landuse at the properties; and their retention has been agreed to in writing (with evidence provided to the Secretary) by the relevant landowners.				
G9	Any individual turbine that ceases operating for a period of more than 12 consecutive months shall be dismantled within 18 months after the 12 month period.	Future	Complies	Future	WRWFPL
G10	The Proponent shall prepare a Decommissioning and Rehabilitation Plan , which shall be submitted for the approval of the Secretary prior to the commencement of construction . The Plan shall be consistent with the requirements of the draft <i>NSW Planning Guidelines — Wind Farms</i> (December 2011), as updated. The plan shall be made publicly available. The Plan shall be updated every five years from the date of preparation, until decommissioning and rehabilitation is completed, and a copy of the updated versions provided to the Secretary and made publicly available. The plan shall include estimated costs of and funding arrangements for decommissioning, including provision for a decommissioning bond or other funding mechanisms, where the plan concludes that estimated costs and funding arrangements are inadequate.	Stage 1	Complies	ERM has prepared D&R Plan and this was submitted to DPE on 17 March 2016 Approved by DPE on 26 April 2016.	WRWFPL
	Decommissioning Road Dilapidation	End Operation		Future requirement	WRWFPL

		SCHEDULE G - ADDITIONAL PROCEDURES Land Acquisition and Criteria	Timing	Compliance	Status	Responsibility
G11		Unless otherwise agreed by the Secretary , the Proponent shall commission an independent, qualified person or team to undertake the following in consultation with the relevant road authority:	Future	Not Triggered yet	Future requirement	WRWFPL
	(a)	prior to the commencement of decommissioning, review the proposed route and existing access provisions to the Wind Farm Site to determine whether the route and existing provisions allow for safe access of decommissioning vehicles associated with the project (including appropriate site distances and provisions for over-mass or over-dimensional transport and safety with other road users). Where improvements or changes to the proposed route are required, the Proponent shall implement these in consultation with the relevant road authority, prior to the commencement of decommissioning and at the full expense of the Proponent;	Future	Not Triggered yet	Future requirement	WRWFPL
	(b)	assess all roads proposed to be used for over-mass and/ or over-dimensional transport (including intersections, bridges, culverts and other road features) prior to the commencement of decommissioning to determine whether the existing road condition can accommodate the proposed over-mass and/ or over-dimensional haulage. Where improvements are required, the Proponent shall implement these in consultation with the relevant road authority, prior to the commencement of decommissioning and at the full expense of the Proponent; and	Future	Not Triggered yet	Future requirement	WRWFPL
	(c)	upon determining the haulage route(s) for decommissioning vehicles associated with the project, and prior to decommissioning, an independent and qualified person or team shall undertake a Road Dilapidation Report . The report shall assess the current condition of the road(s) and describe mechanisms to restore any damage that may result due to traffic and transport related to the decommissioning of the	Future	Not Triggered yet	Future requirement	WRWFPL

		SCHEDULE G - ADDITIONAL PROCEDURES Land Acquisition and Criteria	Timing	Compliance	Status	Responsibility
		project. The Report shall be submitted to the relevant road authority for review prior to the commencement of haulage.				
		Following completion of decommissioning, a subsequent report shall be prepared to assess any damage that may have resulted from the decommissioning of the project.	Future	Not Triggered yet	Future requirement	WRWFPL
G11		Measures undertaken to restore or reinstate roads affected by the project shall be undertaken in a timely manner, in accordance with the reasonable requirements of the relevant road authority, and at the full expense of the Proponent.	Future	Not Triggered yet	Future requirement	WRWFPL
		DECOMMISSIONING ENVIRONMENTAL MANAGEMENT PLAN	End Operation		Future requirement	WRWFPL
G12		Prior to the commencement of decommissioning, or as otherwise agreed by the Secretary , the Proponent shall prepare and implement (following approval) a Decommissioning Environmental Management Plan for the project. The Plan shall outline the environmental management practices and procedures that are to be followed during decommissioning, and shall be prepared in consultation with the relevant agencies and in accordance with the <i>Guideline for the Preparation of Environmental Management Plans</i> (Department of Infrastructure, Planning and Natural Resources, 2004). The Plan shall include, but not necessarily be limited to	End Ops	Not Triggered yet	Future requirement	WRWFPL
	(a)	a description of activities to be undertaken during decommissioning of the project (including staging and scheduling);	End Ops	Not Triggered yet	Future requirement	WRWFPL
	(b)	statutory and other obligations the Proponent is required to fulfil during decommissioning, including approval/consents, consultations and	End Ops	Not Triggered yet	Future requirement	WRWFPL

		SCHEDULE G - ADDITIONAL PROCEDURES Land Acquisition and Criteria	Timing	Compliance	Status	Responsibility
		agreements required from authorities and other stakeholders under key legislation and policies;				
	(c)	a description of the roles and responsibilities for relevant employees involved in the decommissioning of the project, including relevant training and induction provisions for ensuring that employees, including contractors and sub-contractors are aware of their environmental and compliance obligations under these conditions of approval;	End Ops	Not Triggered yet	Future requirement	WRWFPL
	(d)	an environmental risk analysis to identify the key environmental performance issues associated with the decommissioning phase; and	End Ops	Not Triggered yet	Future requirement	WRWFPL
	(e)	details of how environmental performance will be managed and monitored to meet acceptable outcomes, including what actions will be taken to address identified potential adverse environmental impacts (including any impacts arising from the staging of the decommissioning of the project). In particular, the following environmental performance issues shall be addressed in the Plan:	End Ops	Not Triggered yet	Future requirement	WRWFPL
	e-i	(i) compounds and ancillary facilities management;	End Ops	Not Triggered yet	WRWFPL	WRWFPL
	e-ii	noise and vibration	End Ops	Not Triggered yet	Future requirement	WRWFPL
	e-iii	traffic and access	End Ops	Not Triggered yet	Future requirement	WRWFPL

		SCHEDULE G - ADDITIONAL PROCEDURES Land Acquisition and Criteria	Timing	Compliance	Status	Responsibility
	e-iv	soil and water quality and spoil management	End Ops	Not Triggered yet	Future requirement	WRWFPL
	e-v	air quality and dust management	End Ops	Not Triggered yet	Future requirement	WRWFPL
	e-vi	hazardous material and waste management; and	End Ops	Not Triggered yet	Future requirement	WRWFPL
	e-vii	hazard and risk management, including bushfire risk	End Ops	Not Triggered yet	Future requirement	WRWFPL
G12		The Plan shall be submitted for the approval of the Secretary no later than one month prior to the commencement of decommissioning, or as otherwise agreed by the Secretary . The Plan may be prepared in stages, however, decommissioning works shall not commence until written approval has been received from the Secretary .	End Ops	Not Triggered yet	Future requirement	WRWFPL

APPENDICES

No.	Details of Condition	Timing	Compliance	Status	Responsibility
1	<p>Project Layout Figure and</p> <p>Schedule of Land (Also Updated for MOD 4 Approval and additional land.)</p> <p>MOD 5 allows for subdivision of substation sites.</p>	Stage 1	Complies	<p>Complies – Details in Pre-Construction Compliance Report (April 2016)</p> <p>OEMP shows layout post construction</p>	WRWFPL
2	<p>Background Noise Survey and Verification Report</p>	Stage 1	Complies	<p>Background Noise survey and Verification Report submitted to DPE and EPA 01 May 2017. EPA advised requirements complete</p>	WRWFPL
3	<p>Noise Compliance Assessment</p> <p>Part A – South Australian Wind Farms: Environmental Noise Guidelines 2009 (Modified)</p> <p>Part B Noise Compliance Assessment</p>	Stage 1	Complies	<p>Background Noise and Verification Report survey comply</p>	WRWFPL