

361000

361500

41

44

6697000

6696500

6696000



GOLDWIND

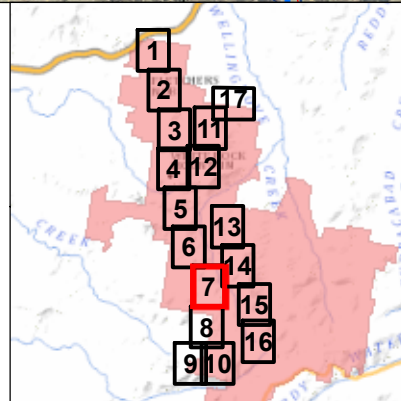


Disclaimer:
This plan was prepared for the purpose and exclusive use of Goldwind Australia. Goldwind Australia gives no warranty in relation to the data (including accuracy, reliability, completeness or suitability) and accepts no liability for any loss, damage or costs (including consequential damage) relating to any use of the data in this map.

Projection: GDA94 MGA56

• LEGEND

- | | | | |
|--|------------------------------------|--|----------------------------------|
| | Site Perimeter | | MOD 3 Approved Layout |
| | Cadastral Boundary | | Operation & Maintenance Facility |
| | 10m Contour | | Temporary Construction Compound |
| | Turbine Layout 66 | | Laydown Area |
| | Approved Turbine Locations | | Concrete Batching Plant |
| | Original PA Approved Layout | | Laydown Area & Batching Plant |
| | Operation & Maintenance Facility | | Project Footprint |
| | Temporary Construction Compound | | Access Tracks |
| | Laydown Area | | Electrical Reticulation |
| | Concrete Batching Plant | | 132kV Overhead Line |
| | Laydown Area & Batching Plant | | |
| | Access Tracks | | |
| | 132kV Overhead Line | | |



White Rock Wind Farm	
• TITLE MOD 3 Approved Layout: Mapsheet 7 of 18	
• DATE 12/04/2016	• PRODUCED I.Mackey
• SCALE 1:5,000 @ A3	• CHECKED A.Maddocks
• STATUS Approved	• APPROVED J.Bembrick
0 50 100 200 Metres	
• DRAWING No. WRWF_MOD3_010_11	• REV 11

361000

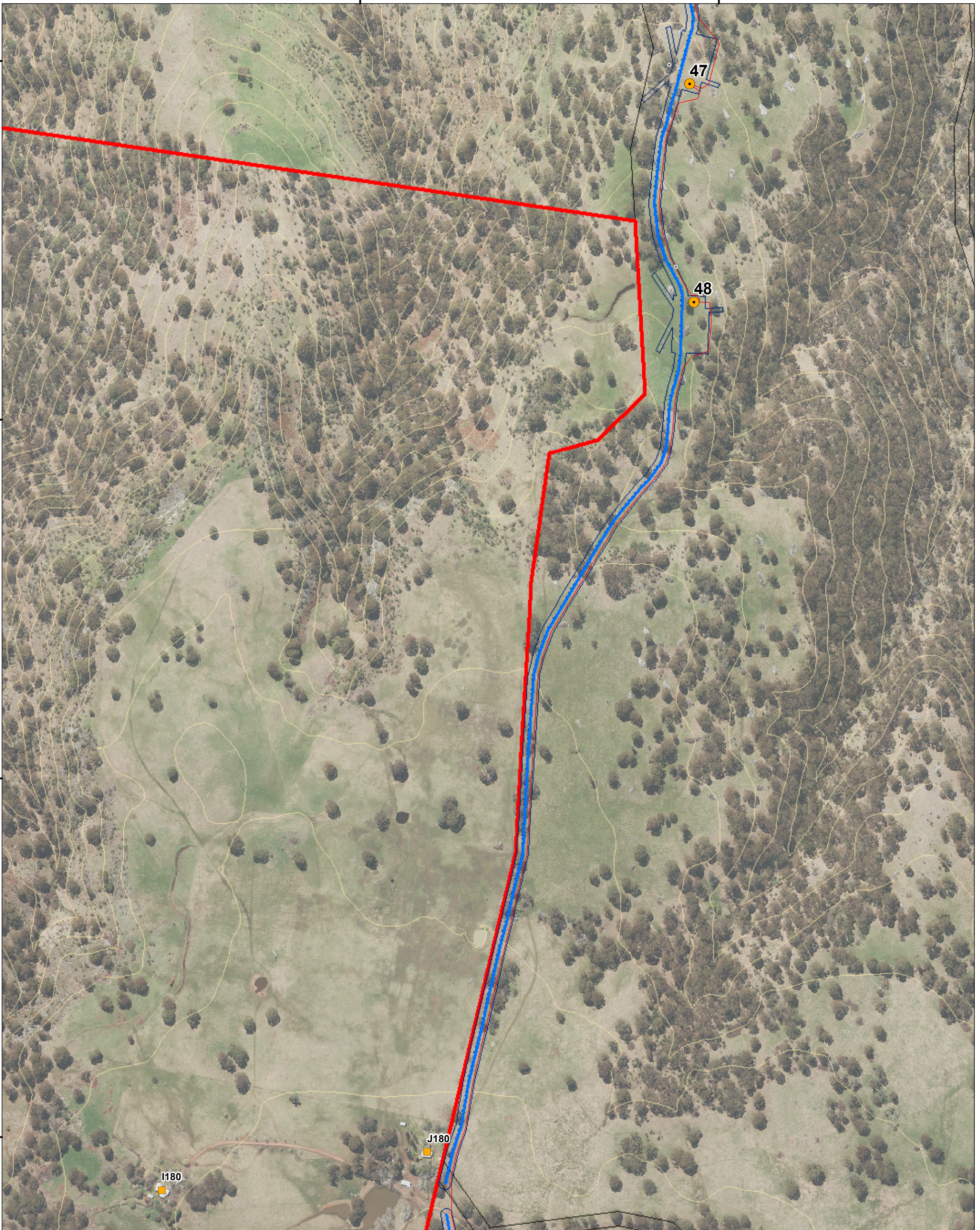
361500

6695500

6695000

6694500

6694000

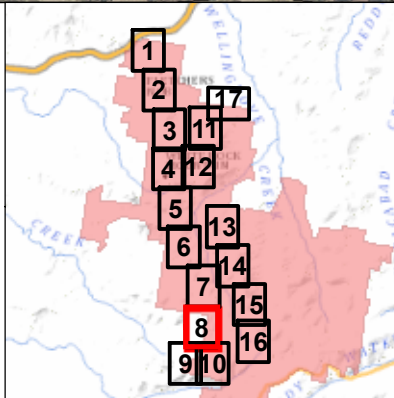


Disclaimer:
This plan was prepared for the purpose and exclusive use of Goldwind Australia. Goldwind Australia gives no warranty in relation to the data (including accuracy, reliability, completeness or suitability) and accepts no liability for any loss, damage or costs (including consequential damage) relating to any use of the data in this map.

Projection: GDA94 MGA56

LEGEND

- | | |
|------------------------------------|----------------------------------|
| Site Perimeter | 132kV Overhead Line |
| Cadastral Boundary | MOD 3 Approved Layout |
| 10m Contour | Operation & Maintenance Facility |
| Turbine Layout 66 | Temporary Construction Compound |
| Approved Turbine Locations | Laydown Area |
| Neighbour Agreement | Concrete Batching Plant |
| Original PA Approved Layout | Laydown Area & Batching Plant |
| Operation & Maintenance Facility | Project Footprint |
| Temporary Construction Compound | Access Tracks |
| Laydown Area | Electrical Reticulation |
| Concrete Batching Plant | 132kV Overhead Line |
| Laydown Area & Batching Plant | |
| Access Tracks | |



White Rock Wind Farm	
MOD 3 Approved Layout: Mapsheet 8 of 18	
DATE: 12/04/2016 SCALE: 1:5,000 @ A3 STATUS: Approved	PRODUCED: I.Mackey CHECKED: A.Maddocks APPROVED: J.Bembrick
DRAWING No.: WRWF_MOD3_010_11	REV: 11



GOLDWIND

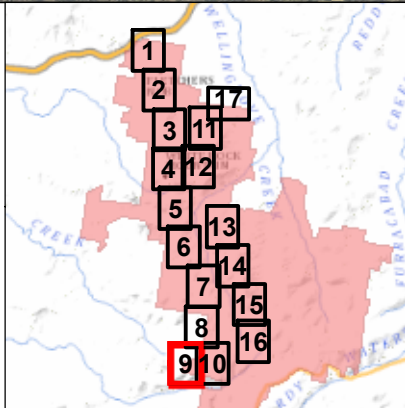
PROJECT MANAGEMENT

Disclaimer: This plan was prepared for the purpose and exclusive use of Goldwind Australia. Goldwind Australia gives no warranty in relation to the data (including accuracy, reliability, completeness or suitability) and accepts no liability for any loss, damage or costs (including consequential damage) relating to any use of the data in this map.

Projection: GDA94 MGA56

LEGEND

Site Perimeter	132kV Overhead Line
Cadastral Boundary	MOD 3 Approved Layout
10m Contour	Operation & Maintenance Facility
Turbine Layout 66	Temporary Construction Compound
Approved Turbine Locations	Laydown Area
Neighbour Agreement	Concrete Batching Plant
Original PA Approved Layout	Laydown Area & Batching Plant
Operation & Maintenance Facility	Project Footprint
Temporary Construction Compound	Access Tracks
Laydown Area	Electrical Reticulation
Concrete Batching Plant	132kV Overhead Line
Laydown Area & Batching Plant	
Access Tracks	



White Rock Wind Farm

MOD 3 Approved Layout: Mapsheet 9 of 18

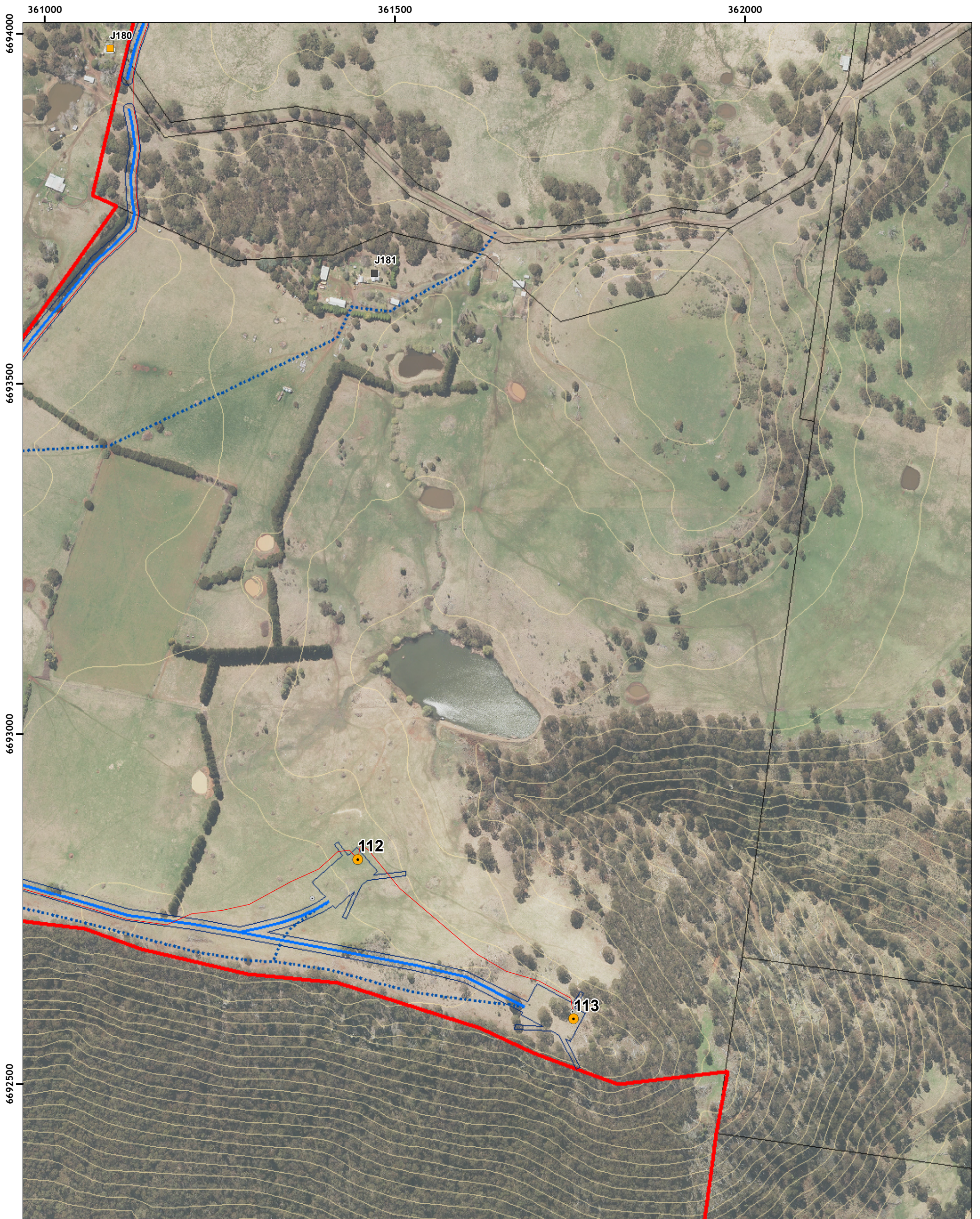
DATE 12/04/2016	PRODUCED I.Mackey
SCALE 1:5,000 @ A3	CHECKED A.Maddocks
STATUS Approved	APPROVED J.Bembrick

DRAWING No.
WRWF_MOD3_010_11

REV
11

0 50 100 200 Metres

N

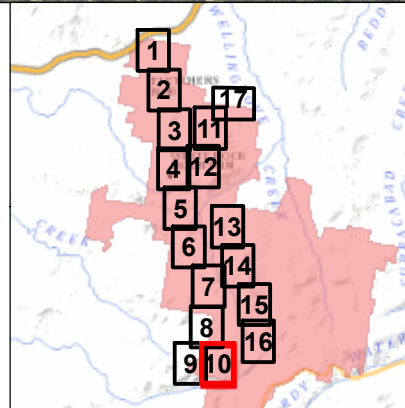


Disclaimer:
This plan was prepared for the purpose and exclusive use of Goldwind Australia. Goldwind Australia gives no warranty in relation to the data (including accuracy, reliability, completeness or suitability) and accepts no liability for any loss, damage or costs (including consequential damage) relating to any use of the data in this map.

Projection: GDA94 MGA56

• LEGEND

- | | | | |
|--|----------------------------------|--|----------------------------------|
| | Site Perimeter | | Access Tracks |
| | Cadastral Boundary | | 132kV Overhead Line |
| | 10m Contour | | Operation & Maintenance Facility |
| | Turbine Layout 66 | | Temporary Construction Compound |
| | Approved Turbine Locations | | Laydown Area |
| | Involved Residence | | Concrete Batching Plant |
| | Neighbour Agreement | | Laydown Area & Batching Plant |
| | Original PA Approved Layout | | Project Footprint |
| | Operation & Maintenance Facility | | Access Tracks |
| | Temporary Construction Compound | | Electrical Reticulation |
| | Laydown Area | | 132kV Overhead Line |
| | Concrete Batching Plant | | |
| | Laydown Area & Batching Plant | | |



White Rock Wind Farm	
MOD 3 Approved Layout: Mapsheet 10 of 18	
• DATE 12/04/2016 • SCALE 1:5,000 @ A3 • STATUS Approved	• PRODUCED I.Mackey • CHECKED A.Maddocks • APPROVED J.Bembrick
• DRAWING No. WRWF_MOD3_010_11	• REV 11

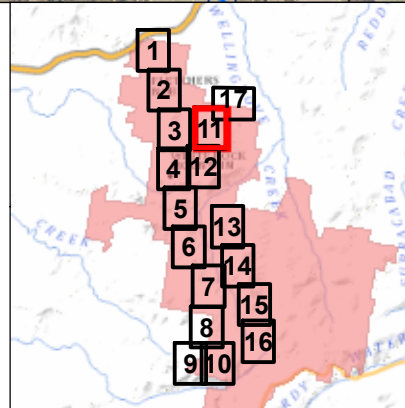


Disclaimer:
This plan was prepared for the purpose and exclusive use of Goldwind Australia. Goldwind Australia gives no warranty in relation to the data (including accuracy, reliability, completeness or suitability) and accepts no liability for any loss, damage or costs (including consequential damage) relating to any use of the data in this map.

Projection: GDA94 MGA56

LEGEND

- | | |
|----------------------------------|----------------------------------|
| Site Perimeter | MOD 3 Approved Layout |
| Cadastral Boundary | Operation & Maintenance Facility |
| 10m Contour | Temporary Construction Compound |
| Turbine Layout 66 | Laydown Area |
| Approved Turbine Locations | Concrete Batching Plant |
| Original PA Approved Layout | Laydown Area & Batching Plant |
| Operation & Maintenance Facility | Project Footprint |
| Temporary Construction Compound | Access Tracks |
| Laydown Area | Electrical Reticulation |
| Concrete Batching Plant | 132kV Overhead Line |
| Laydown Area & Batching Plant | |
| Access Tracks | |
| 132kV Overhead Line | |



White Rock Wind Farm	
MOD 3 Approved Layout: Mapsheet 11 of 18	
• DATE 12/04/2016 • SCALE 1:5,000 @ A3 • STATUS Approved	• PRODUCED I.Mackey • CHECKED A.Maddocks • APPROVED J.Bembrick
0 50 100 200 Metres	
• DRAWING No. WRWF_MOD3_010_11	• REV 11

360500

361000

361500

6702000

6701500

6701000



Potential 33kV Overhead Line

58

59

60

61

56

57

5960

GOLDWIND

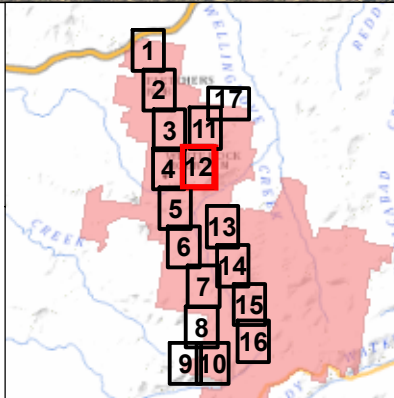


Disclaimer: This plan was prepared for the purpose and exclusive use of Goldwind Australia. Goldwind Australia gives no warranty in relation to the data (including accuracy, reliability, completeness or suitability) and accepts no liability for any loss, damage or costs (including consequential damage) relating to any use of the data in this map.

Projection: GDA94 MGA56

LEGEND

- Site Perimeter
- Cadastral Boundary
- 10m Contour
- Turbine Layout 66
- Approved Turbine Locations
- Permanent Met Mast
- 33kV Overhead Line
- 132kV Overhead Line
- Access Tracks
- Operation & Maintenance Facility
- Temporary Construction Compound
- Laydown Area
- Concrete Batching Plant
- Laydown Area & Batching Plant
- Project Footprint
- Access Tracks
- Electrical Reticulation
- 132kV Overhead Line



White Rock Wind Farm	
MOD 3 Approved Layout: Mapsheet 12 of 18	
• DATE: 12/04/2016 • SCALE: 1:5,000 @ A3 • STATUS: Approved	• PRODUCED: I.Mackey • CHECKED: A.Maddocks • APPROVED: J.Bembrick
• DRAWING No.: WRWF_MOD3_010_11	• REV: 11